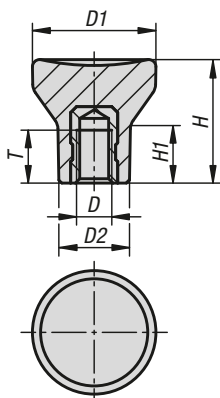


Mushroom knobs

internal thread



Material:

Thermoset PF 31.
Steel or stainless steel.

Version:

Thermoset black, high-gloss polished.
Trivalent blue passivated steel or bright stainless steel.

Sample order:

K1286.104

Note:

K1286.104 has a brass bush.

KIPP Mushroom knobs with internal thread

Order No.	Component material	D	D1	D2	H	H1	T
K1286.104	brass	M4	21	12	21	10	6
K1286.105	steel	M5	21	12	21	10	7,5
K1286.206	steel	M6	25	14	25	12	9
K1286.308	steel	M8	33	18	33	16	12
K1286.1104	stainless steel	M4	21	12	21	10	6
K1286.1105	stainless steel	M5	21	12	21	10	7,5
K1286.1206	stainless steel	M6	25	14	25	12	9
K1286.1308	stainless steel	M8	33	18	33	16	12