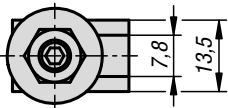
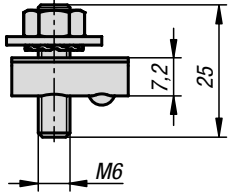


Earthing terminal

type I

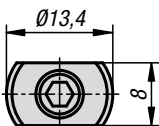
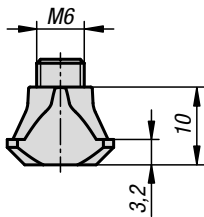


KIPP Earthing terminal type I

Order No.	Version 2	Slot width
K1282.0806	type I	8

Potential equaliser

type I



KIPP Potential equaliser type I

Order No.	Version 2	Slot width
K1283.0806	type I	8



Material:

Slot key, grub screw and serrated washer, steel.
Nut and washer, brass.

Version:

Slot key, grub screw and serrated washer, electro zinc-plated.

Sample order:

K1282.0806

Note:

For protecting installations and persons. Connectors for earthing aluminium profile structures and interconnecting the aluminium profiles by integrating them into the protective earth (PE) system. Conductive contact is established through defined destruction of the oxide layer in the slot base and on the slot flanks.

The cable lug must be positioned between the serrated washer and the washer during assembly.



Material:

Steel.

Version:

Electro zinc-plated.

Sample order:

K1283.0806

Note:

For generating electrostatic discharge (ESD). For safely equalising electrostatic charge of profiles. It is swivelled into the slot and screwed against the profiles at a 45° angle. A conductive connection is established by breaking through the oxide layer.

Attention:

A potential equaliser is not an electrical connection of the protective earth (PE) system.