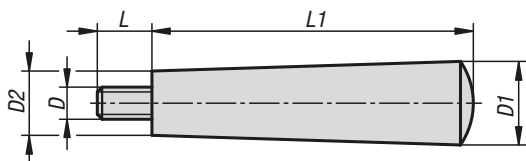


# K1221

## Taper grips fixed



**Material:**  
Black thermoset PF 31.  
Screw electro zinc-plated steel.

**Version:**  
High-gloss polished.

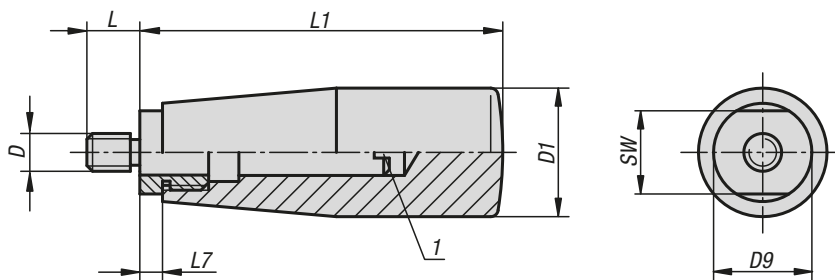
**Sample order:**  
K1221.120408

### KIPP Taper grips, fixed

Order No.	D	D1	D2	L	L1
K1221.120408	M4	12	9	8	40
K1221.150507	M5	15	11	7	50
K1221.180608	M6	18	13	8	64
K1221.210610	M6	21	15	10	72
K1221.210810	M8	21	15	10	72
K1221.250810	M8	25	17	10	90
K1221.261012	M10	26	20	12	100

# K0170

## Taper grips revolving



**Material:**  
Black thermoset PF 31.  
Centre pin and tapped bush electro zinc-plated steel or bright stainless steel.

**Version:**  
High-gloss polished.

**Sample order:**  
K0170.105007

**Note:**  
To mount unscrew the axle.

**Drawing reference:**  
1) mounting aid

### KIPP Taper grips revolving

Order No. steel	Order No. stainless steel	D	D1	D9	L	L1	L7	SW
K0170.105007	K0170.1105007	M5	17	15	7	51	5	13
K0170.206008	K0170.1206008	M6	23	18	8	68	6	16
K0170.208009	K0170.1208009	M8	23	18	9	68	6	16
K0170.310011	K0170.1310011	M10	28	21	11	77	7	19