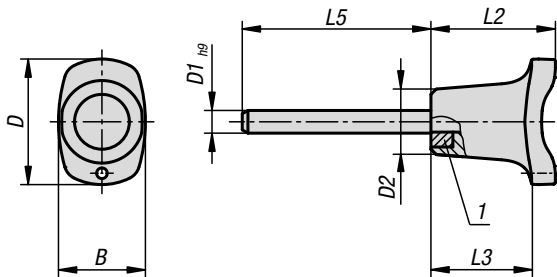


Locking pins

with magnetic axial lock



Material:

Grip thermoplastic.
Steel parts 1.4305 stainless steel.
Magnet NdFeB.

Version:

Grip black.
Stainless steel bright.

Sample order:

K1216.3306030
(include length L e.g. 030 for L = 30 mm.)

Note:

The locking pins with magnetic axial lock are used for fast and easy fixating and joining of parts and workpieces.

Magnets integrated into the grip ensure axial positioning and hold the locking pin in the inserted position.

Smooth surfaces and a perpendicular insertion bore have a positive effect on the retaining forces.

Optional retainer systems can be used to make the locking pins captive.

Shear force double-shear (F) = S · τ aB max.

On request:

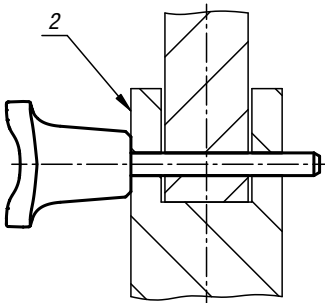
Other pin lengths.

Accessories:

- Safety spiral cable K0367....
- Retaining cable with loop K0367....
- Key ring K0367....
- Ball chains K1125....

Drawing reference:

- 1) Magnet
- 2) Steel part/workpiece



KIPP Locking pin with magnetic axial lock

Order No.	B	D	D1	D2	L2	L3	L5	Receiving hole	Shearing force double shear max.kN	Clamping force ca. N
K1216.3306***	23	33,2	6	17,3	33	26,1	15/30/40/50/60/70/80	6	22	43
K1216.3308***	23	33,2	8	17,3	33	26,1	15/30/40/50/60/70/80	8	38	43
K1216.4610***	33	45,9	10	26,3	39,5	31,3	15/30/40/50/60/70/80	10	60	74
K1216.4612***	33	45,9	12	26,3	39,5	31,3	30/40/50/60/70/80	12	86	74