

## Clamp stops adjustable

for slot profiles



**Material:**

Body aluminium.  
Other metal components steel.  
Plastic components PA6.

**Version:**

Body natural tone anodised.  
Other metal components trivalent blue passivated.

**Sample order:**

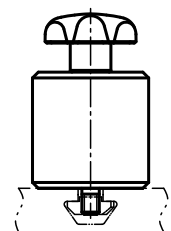
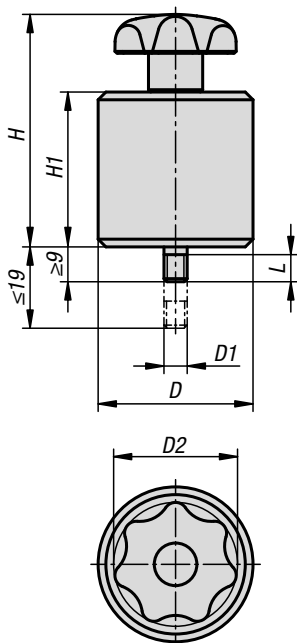
K1214.064040

**Note:**

Sliding stop for profile systems type B, type I, and DIN 650 T-slots. Locked by turning the star grip. Sprung threaded pin ensures smooth sliding without tilting the slot key when loosened.

**Accessories:**

- K1023.0806
- K1024.0606
- K1024.0806
- K1025.0806
- K1026.1006
- K1027.1006
- K0377.06
- K0377.061
- K0377.806
- K0377.2061
- K0377.206



**KIPP Clamp stops adjustable for slot profiles**

Order No.	D	D1	D2	H	H1	L
K1214.064040	40	M6	32	60	40	7