

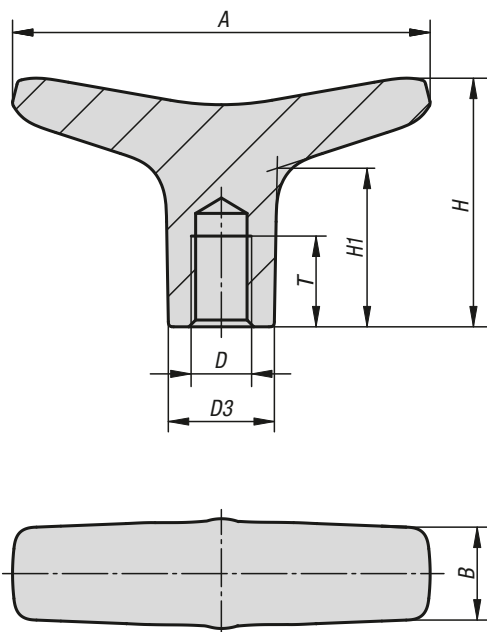
## T-grips stainless steel



**Material:**  
Stainless steel 1.4308.

**Version:**  
Electropolished or blasted.

**Sample order:**  
K1203.55061



### KIPP T-grips, stainless steel

| Order No.   | Surface finish body | A    | B    | D   | D3 | H    | H1   | T  |
|-------------|---------------------|------|------|-----|----|------|------|----|
| K1203.55061 | blasted             | 55,2 | 12,3 | M6  | 14 | 32,9 | 21   | 12 |
| K1203.55081 | blasted             | 55,2 | 12,3 | M8  | 14 | 32,9 | 21   | 12 |
| K1203.65061 | blasted             | 65,3 | 14   | M6  | 16 | 37   | 22,7 | 16 |
| K1203.65081 | blasted             | 65,3 | 14   | M8  | 16 | 37   | 22,7 | 16 |
| K1203.65101 | blasted             | 65,3 | 14   | M10 | 16 | 37   | 22,7 | 16 |
| K1203.75101 | blasted             | 75,3 | 17,8 | M10 | 20 | 41,2 | 24,9 | 16 |
| K1203.75121 | blasted             | 75,3 | 17,8 | M12 | 20 | 41,2 | 24,9 | 16 |
| K1203.55062 | electropolished     | 55,2 | 12,3 | M6  | 14 | 32,9 | 21   | 12 |
| K1203.55082 | electropolished     | 55,2 | 12,3 | M8  | 14 | 32,9 | 21   | 12 |
| K1203.65062 | electropolished     | 65,3 | 14   | M6  | 16 | 37   | 22,7 | 16 |
| K1203.65082 | electropolished     | 65,3 | 14   | M8  | 16 | 37   | 22,7 | 16 |
| K1203.65102 | electropolished     | 65,3 | 14   | M10 | 16 | 37   | 22,7 | 16 |
| K1203.75102 | electropolished     | 75,3 | 17,8 | M10 | 20 | 41,2 | 24,9 | 16 |
| K1203.75122 | electropolished     | 75,3 | 17,8 | M12 | 20 | 41,2 | 24,9 | 16 |