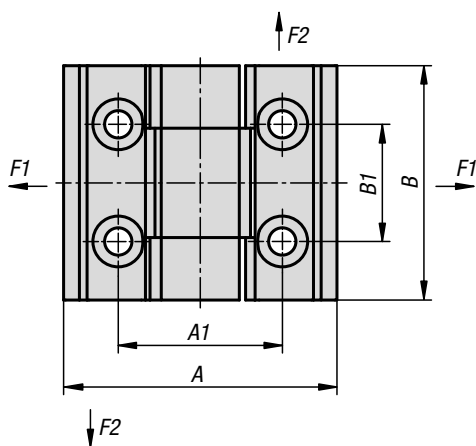
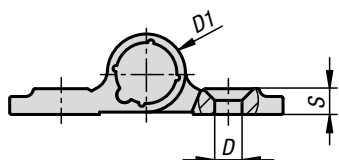


Spring hinges

aluminium profile, 0.2 Nm



Material:

Aluminium 6060 T5.
Cover plug PA 6.6.

Version:

Black anodised.
Colourless anodised.

Sample order:

K1178.353001

Note:

The hinges are fitted with an integrated steel tension spring. This enables automatic opening and closing of doors and hatches.
Opening angle 270°.

Opening spring torque:

$M(0^\circ) : 0.23 \text{ Nm} / M(90^\circ) : 0.15 \text{ Nm} / M(180^\circ) : 0.08 \text{ Nm}$

Closing spring torque:

$M(0^\circ) : 0.08 \text{ Nm} / M(90^\circ) : 0.15 \text{ Nm} / M(180^\circ) : 0.23 \text{ Nm}$

Fastened using DIN 7991 countersunk screws.

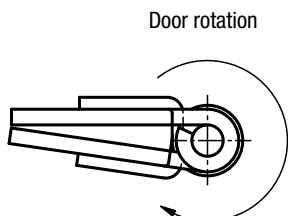
The loading values given for the hinges are non-binding reference values without consideration of safety factors and exclude any liability. The values given are for information purposes only and do not constitute a legally binding assurance of properties.

These load values were determined under laboratory conditions. Each user must determine individually whether the hinge is suitable for the respective application. Different materials onto which the hinges are installed and the type of mounting, weather conditions and wear can influence the determined values.

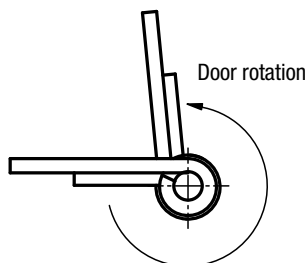
Temperature range:

From -20°C to +80°C

Hinges with closing spring



Hinges with opening spring



KIPP Spring hinges aluminium profile, 0.2 Nm

Order No.	Version 1	Main colour	A	A1	B	B1	D	D1	S
K1178.353001	spring open	black	35	21	30	15	3,5	10	3,3
K1178.35300	spring open	colourless	35	21	30	15	3,5	10	3,5
K1178.353011	spring closed	black	35	21	30	15	3,5	10	3,3
K1178.35301	spring closed	colourless	35	21	30	15	3,5	10	3,5