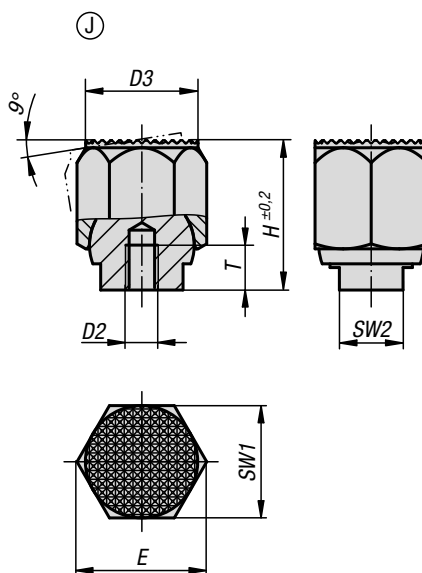
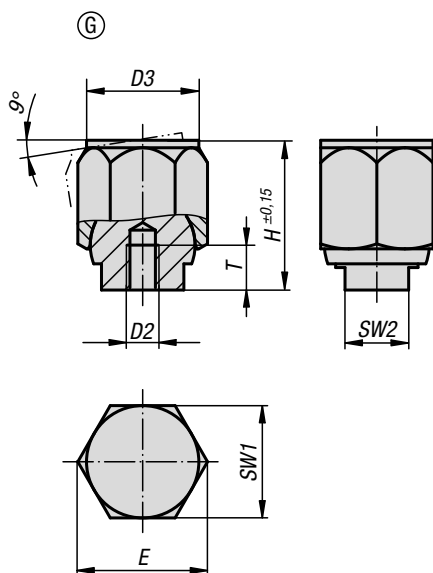
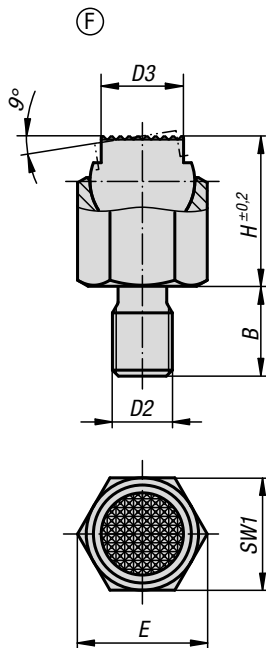
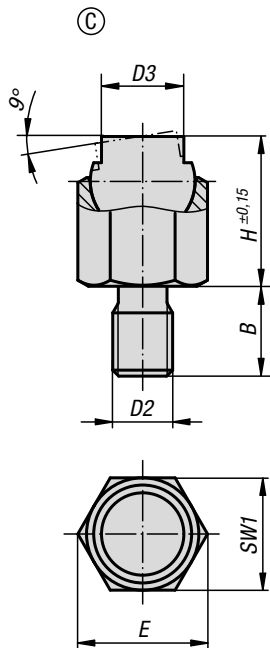


Self-aligning pads

self-righting



Material:

Form C and F:
Ball steel, ball seat high-carbon steel.
Form G and J:
Ball high-carbon steel, ball seat steel.

Version:

Form C and F:
Ball hardened and black oxidised, ball seat phosphated.
Form G and J:
Ball phosphated, ball seat hardened and black oxidised.

Sample order:

K1164.106

Note:

The self-aligning pads serve as stops, rests and thrust pads in fixture construction. The seating face returns to the start position when the load is removed.

Ball secured against rotation.

Drawing reference:

Form C: male thread, flattened ball, smooth
Form F: male thread, flattened ball, diamond grip
Form G: press fit, flattened ball, smooth
Form J: press fit, flattened ball, diamond grip

Self-aligning pads

self-righting



KIPP Self-aligning pads, self-righting

Order No.	Form	B	D2	D3	H	E	SW1	Ball-Ø	Load rating max. kN (static load only)
K1164.106	C	9	M6	7	13	11,5	10	9	8
K1164.108	C	12	M8	9,5	18	15	13	12	16
K1164.110	C	15	M10	14	25	21,9	19	17	32
K1164.112	C	18	M12	20	36	31,2	27	25	64
K1164.116	C	24	M16	22	40	34,6	30	28	90

Order No.	Form	B	D2	D3	H	E	SW1	Ball-Ø	Load rating max. kN (static load only)
K1164.306	F	9	M6	7	13	11,5	10	9	8
K1164.308	F	12	M8	9,5	18	15	13	12	16
K1164.310	F	15	M10	14	25	21,9	19	17	32
K1164.312	F	18	M12	20	36	31,2	27	25	64
K1164.316	F	24	M16	22	40	34,6	30	28	90

Order No.	Form	D2	D3	H	E	T	SW1	SW2	Ball-Ø	Load rating max. kN (static load only)
K1164.403	G	M3	9	13	11,5	5	10	6	9	8
K1164.404	G	M4	12	18	15	6	13	8	12	16
K1164.405	G	M5	18	25	21,9	8	19	10	17	32
K1164.406	G	M6	26	36	31,2	10	27	16	25	64
K1164.408	G	M8	30	40	34,6	12	30	17	28	90

Order No.	Form	D2	D3	H	E	T	SW1	SW2	Ball-Ø	Load rating max. kN (static load only)
K1164.603	J	M3	9	13	11,5	5	10	6	9	8
K1164.604	J	M4	12	18	15	6	13	8	12	16
K1164.605	J	M5	18	25	21,9	8	19	10	17	32
K1164.606	J	M6	26	36	31,2	10	27	16	25	64
K1164.608	J	M8	30	40	34,6	12	30	17	28	90