

Bullseye levels

with bead-edged frame



Material:

Frame brass.
Bullseye level body polyamide.

Version:

Nickel-plated and high-gloss polished.

Sample order:

K1152.181030

Note:

Bubble levels are used as a type of zero indicator instrument for checking horizontal inclination in e.g. spirit levels, inclinometers, metrology instruments and machine constructions.

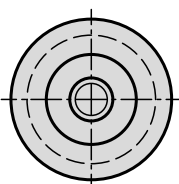
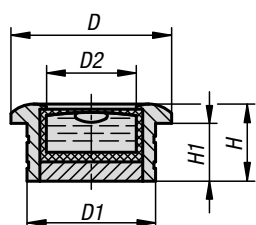
- Sensitivity in angular minutes for 2 mm bubble travel
- The bullseye level is calibrated to underside of the flange
- Bead edge with serrations for recessing
- Clear filling
- Black contrast ring
- White level base

Temperature range:

-35 °C up to +55 °C.

Assembly:

- Measure the level body
- Assemble by pressing in a hole that is 0.02 mm – 0.03 mm smaller than the \varnothing of the level body
- A chamfer on the hole will ease pressing in



KIPP Bullseye levels with bead-edge frame

Order No.	D	D1	D2	H	H1	Sensitivity
K1152.181030	20	18	12	10	8	30'
K1152.201230	25	20	14	12	9	30'
K1152.281330	30	28	20	13	10	30'