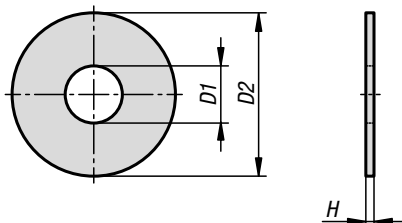


Washers with large OD

DIN 9021



Material:

Steel, stainless steel A2 or stainless steel A4.

Version:

Steel electro zinc-plated, hardness

$D1 \leq 14 = 140 \text{ HV}$.

$D1 > 17 = 100 \text{ HV}$.

Stainless steel A2, bright.

Stainless steel A4, bright.

Sample order:

K1150.03

Note:

The pulleys have an OD of $D2 = \sim 3 \times D1$.

KIPP Washers with large OD DIN 9021

Order No. steel	Order No. stainless steel A2	Order No. stainless steel A4	for screws	D1	D2	H
K1150.03	K1150.103	K1150.603	M3	3,2	9	0,8
K1150.04	K1150.104	K1150.604	M4	4,3	12	1
K1150.05	K1150.105	K1150.605	M5	5,3	15	1,2
K1150.06	K1150.106	K1150.606	M6	6,4	18	1,6
K1150.08	K1150.108	K1150.608	M8	8,4	24	2
K1150.10	K1150.110	K1150.610	M10	10,5	30	2,5
K1150.12	K1150.112	K1150.612	M12	13	37	3
K1150.14	K1150.114	K1150.614	M14	15	44	3
K1150.16	K1150.116	K1150.616	M16	17	50	3
K1150.18	K1150.118	K1150.618	M18	20	56	4
K1150.20	K1150.120	K1150.620	M20	22	60	4
K1150.24	K1150.124	K1150.624	M24	26	72	5
K1150.30	-	-	M30	33	92	6