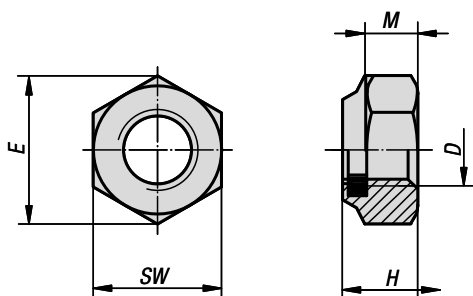


Hexagon nuts with polyamide thread lock

thin type, DIN 985



Material:

Steel, stainless steel A2 or stainless steel A4.

Version:

Steel electro zinc-plated.
Stainless steel A2, bright.
Stainless steel A4, bright.

Sample order:

K1148.203

Note:

When screwing the nuts onto the thread, the thread lock is plastically and elastically deformed. The elastic deformation causes a radial frictional lock against the nuts being loosened.

The plastic thread lock is only effective when the nuts are fully screwed onto the male thread. The screw length must be selected so that at least two full threads protrude from the nut.

Due to the plastic deformation of the thread lock, these nuts should only be used once.

Temperature range:

-50°C to +120°C.

KIPP Hexagon nuts with polyamide thread lock, thin type DIN 985

Order No. steel Grade 6-8	Order No. steel Grade 8	Order No. steel Grade 10	D	E	H	M	SW
K1148.203	-	-	M3	6,08	4	2,4	5,5
K1148.204	-	-	M4	7,66	5	2,9	7
K1148.205	-	-	M5	8,79	5	3,2	8
-	K1148.206	K1148.306	M6	11,05	6	4	10
-	K1148.208	K1148.308	M8	14,38	8	5,5	13
-	K1148.210	K1148.310	M10	18,9	10	6,5	17
-	K1148.212	K1148.312	M12	21,1	12	8	19
-	K1148.214	K1148.314	M14	23,9	14	9,5	22
-	K1148.216	K1148.316	M16	26,76	16	10,5	24
-	K1148.220	K1148.320	M20	32,95	20	14	30
-	K1148.224	-	M24	39,55	24	15	36
-	K1148.227	K1148.327	M27	45,2	27	17	41
-	K1148.230	K1148.330	M30	50,85	30	19	46
-	-	K1148.324	M24	35	24	15	36

Hexagon nuts with polyamide thread lock

thin type, DIN 985



Order No.	Main material	Grade	D	E	H	M	SW
K1148.103	stainless steel A2	70	M3	6,08	4	2,4	5,5
K1148.104	stainless steel A2	70	M4	7,66	5	2,9	7
K1148.105	stainless steel A2	70	M5	8,79	5	3,2	8
K1148.106	stainless steel A2	70	M6	11,05	6	4	10
K1148.108	stainless steel A2	70	M8	14,38	8	5,5	13
K1148.110	stainless steel A2	70	M10	18,9	10	6,5	17
K1148.112	stainless steel A2	70	M12	21,1	12	8	19
K1148.114	stainless steel A2	70	M14	23,9	14	9,5	22
K1148.116	stainless steel A2	70	M16	26,76	16	10,5	24
K1148.120	stainless steel A2	70	M20	32,95	20	14	30
K1148.124	stainless steel A2	70	M24	39,55	24	15	36
K1148.127	stainless steel A2	70	M27	45,2	27	17	41
K1148.130	stainless steel A2	70	M30	50,85	30	19	46
K1148.603	stainless steel A4	70	M3	6,08	4	2,4	5,5
K1148.604	stainless steel A4	70	M4	7,66	5	2,9	7
K1148.605	stainless steel A4	70	M5	8,79	5	3,2	8
K1148.606	stainless steel A4	70	M6	11,05	6	4	10
K1148.608	stainless steel A4	70	M8	14,38	8	5,5	13
K1148.610	stainless steel A4	70	M10	18,9	10	6,5	17
K1148.612	stainless steel A4	70	M12	21,1	12	8	19
K1148.614	stainless steel A4	70	M14	23,9	14	9,5	22
K1148.616	stainless steel A4	70	M16	26,76	16	10,5	24
K1148.620	stainless steel A4	70	M20	32,95	20	14	30
K1148.624	stainless steel A4	70	M24	39,55	24	15	36
K1148.627	stainless steel A4	70	M27	45,2	27	17	41
K1148.630	stainless steel A4	70	M30	50,85	30	19	46