

Material:

Thermoplastic black.
Bush steel, stainless steel or brass.

Version:

Bush blue passivated steel, stainless steel and brass bright.

Sample order:

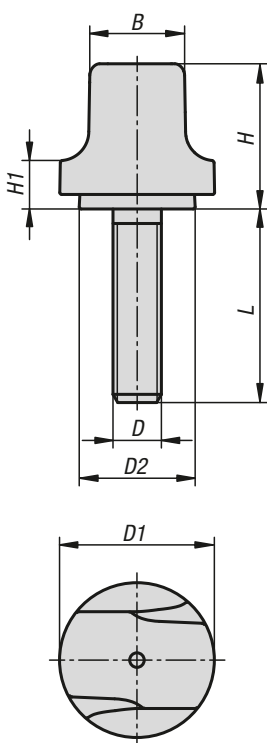
K1126.103



KIPP Grip nuts

Order No.	Component material	B	D	D1	D2	H	H1	T
K1126.103	brass	10	M3	16	12	15	5	4,5
K1126.104	brass	10	M4	16	12	15	5	6
K1126.204	brass	12,3	M4	20	15	18,5	6	6
K1126.205	brass	12,3	M5	20	15	18,5	6	6
K1126.305	steel	15,3	M5	25	18,7	22,9	7,3	8,5
K1126.306	steel	15,3	M6	25	18,7	22,9	7,3	9
K1126.1003	stainless steel	10	M3	16	12	15	5	4,5
K1126.1004	stainless steel	10	M4	16	12	15	5	6
K1126.2004	stainless steel	12,3	M4	20	15	18,5	6	6
K1126.2005	stainless steel	12,3	M5	20	15	18,5	6	6
K1126.3005	stainless steel	15,3	M5	25	18,7	22,9	7,3	8,5
K1126.3006	stainless steel	15,3	M6	25	18,7	22,9	7,3	9

Grip screws



Material:

Thermoplastic black. Screw steel or stainless steel.

Version:

Screw blue passivated steel or bright stainless steel.

Sample order:

K1126.103X8 (include length L.)

KIPP Grip screws

Order No. steel	Order No. stainless steel	B	D	D1	D2	H	H1	L
K1126.103X	K1126.1003X	10	M3	16	12	15	5	8/10/12/15
K1126.104X	K1126.1004X	10	M4	16	12	15	5	10/15/20
K1126.105X	K1126.1005X	10	M5	16	12	15	5	10/15/20
K1126.204X	K1126.2004X	12,3	M4	20	15	18,5	6	10/15/20
K1126.205X	K1126.2005X	12,3	M5	20	15	18,5	6	10/15/20/25
K1126.206X	K1126.2006X	12,3	M6	20	15	18,5	6	10/15/20/25
K1126.305X	K1126.3005X	15,3	M5	25	18,7	22,9	7,3	10/15/20/25
K1126.306X	K1126.3006X	15,3	M6	25	18,7	22,9	7,3	10/15/20/25
K1126.308X	K1126.3008X	15,3	M8	25	18,7	22,9	7,3	15/20/25/30