

## Magnetic bushes



**Material:**  
Housing stainless steel.  
Magnet neodymium.

**Version:**  
Housing bright.

**Sample order:**  
K1068.6

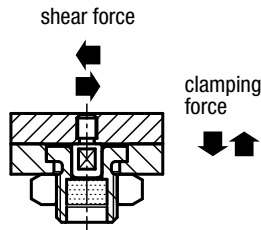
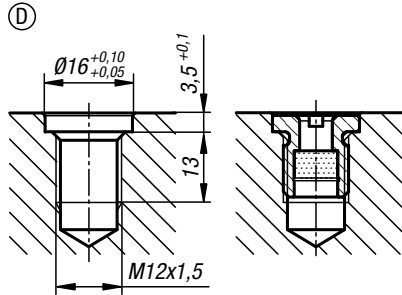
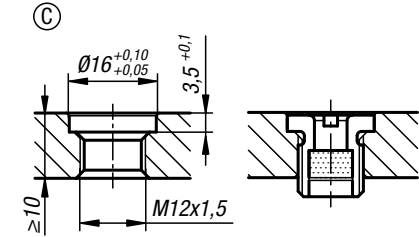
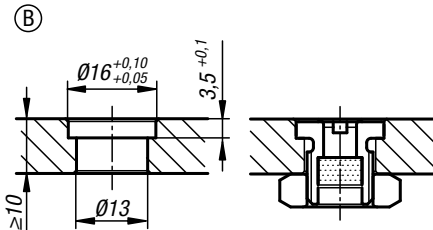
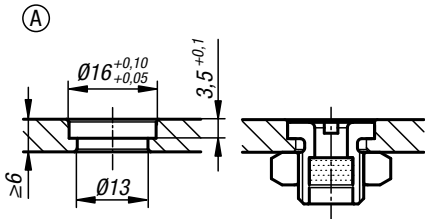
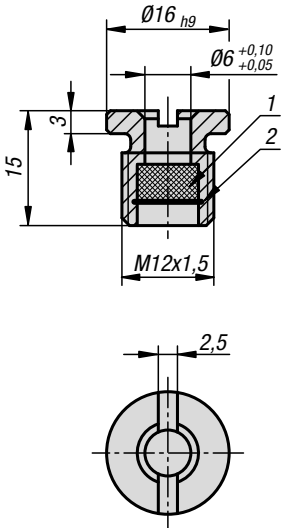
**Note:**  
A magnet in the bush attracts the pin (K1069) and holds it with the specified retaining force.  
Repeat accuracy  $\pm 0.25$ . The repeat accuracy can be increased with the aid of additional locating pins.

Installation dimensions for Form A:  
min. plate thickness 6 mm.  
Installation dimensions for Form B:  
max. plate thickness 10 mm.  
Installation dimensions for Form C:  
plate thickness > 10 mm.  
Installation dimensions for Form D:  
blind hole.

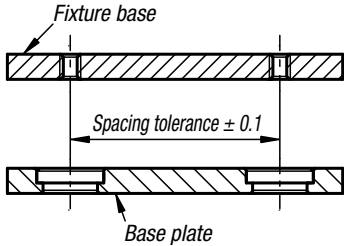
**On request:**  
Suitable nuts.

**Accessories:**  
Pin K1069

**Drawing reference:**  
1) magnet  
2) circlip



**Recommended installation tolerances:**



**KIPP Magnetic bushes**

Order No.	Clamping force N	Shearing force kN	Temperature resistance
K1068.6	7	0,8	≤80 °C