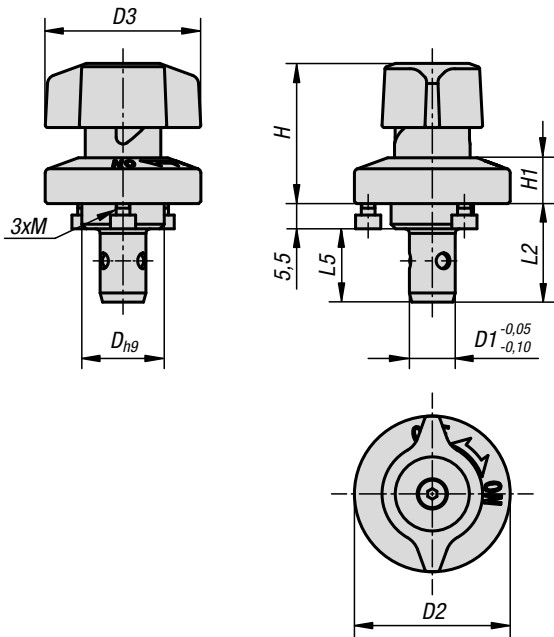


## Ball lock pins

with twist knob



**Material:**

Housing stainless steel.  
Pin steel or stainless steel.  
Knob PA thermoplastic (polyamide) or stainless steel.  
Ball and spring stainless steel.

**Version:**

Housing bright. Steel pin tempered and nickel plated.  
Stainless steel pin tempered. Twist knob fibreglass reinforced, black or bright. Ball tempered.

**Sample order:**

K1064.620

**Note:**

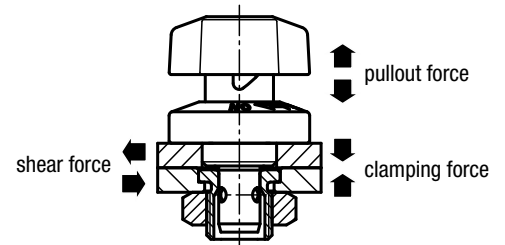
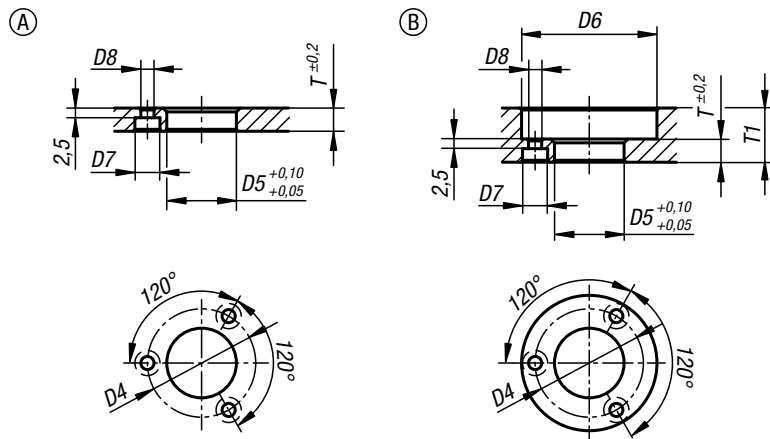
Installation dimensions for Form A for plate thickness 6 or 12 mm.  
Installation dimensions for Form B for plate thickness up to 20 mm.  
Includes M2 or M3 mounting screws.

**Attention:**

The specified pullout forces only apply in conjunction with locating bush K1065.

**Accessories:**

Locating bush K1065.



### KIPP Ball lock pin with twist knob

Order No.	Component material	Version 2	D	D1	D2	D3	D4	H	H1	L2	L5	M	D5	D6	D7	D8	T	T1
K1064.620	polyamide	pins steel	14	6	25	25	21	24,5	6,5	19,5	14	M2x3	14	26	4,4	2,4	6	6-10
K1064.1022	polyamide	pins steel	18	10	34	34	28	31	10	21,5	16	M3x4	18	35	6,5	3,4	6	6-14
K1064.1028	polyamide	pins steel	18	10	34	34	28	31	10	27,5	22	M3x4	18	35	6,5	3,4	12	12-20
K1064.1620	stainless steel	pin stainless steel	14	6	25	25	21	24,5	6,5	19,5	14	M2x3	14	26	4,4	2,4	6	6-10
K1064.11022	stainless steel	pin stainless steel	18	10	34	34	28	31	10	21,5	16	M3x4	18	35	6,5	3,4	6	6-14
K1064.11028	stainless steel	pin stainless steel	18	10	34	34	28	31	10	27,5	22	M3x4	18	35	6,5	3,4	12	12-20

### KIPP Ball lock pins with twist knob, technical information

Order No.	Component material	Version 2	Clamping force N	Shearing force kN	Pullout force F kN	Temperature resistance
K1064.620	polyamide	pins steel	30	3	0,5	≤130 °C
K1064.1022	polyamide	pins steel	50	9	1,5	≤130 °C
K1064.1028	polyamide	pins steel	50	9	1,5	≤130 °C
K1064.1620	stainless steel	pin stainless steel	30	3	0,5	≤130 °C
K1064.11022	stainless steel	pin stainless steel	50	9	1,5	≤130 °C
K1064.11028	stainless steel	pin stainless steel	50	9	1,5	≤130 °C