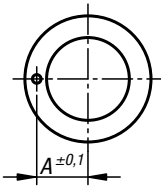
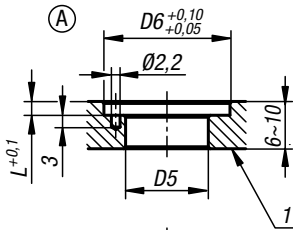
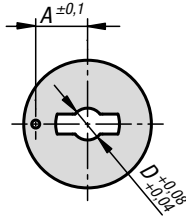
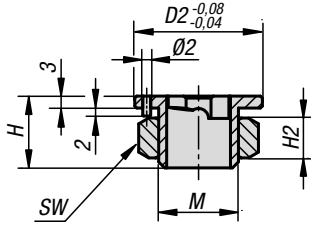


## Clamping plates

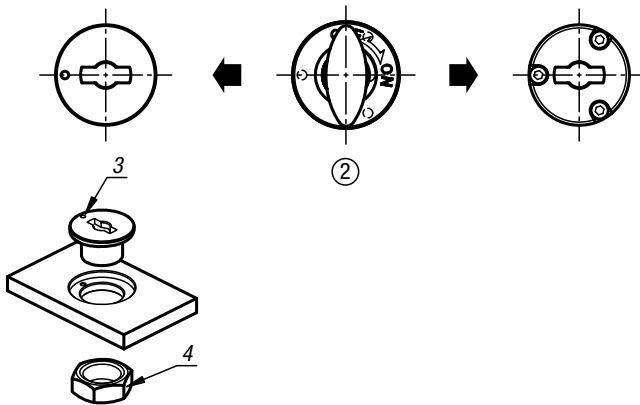
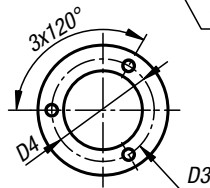
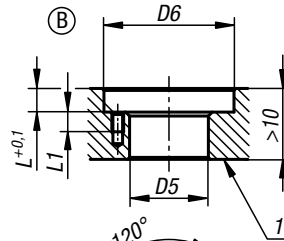
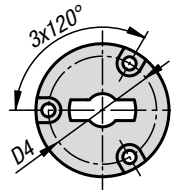
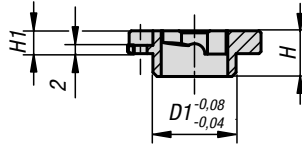
for quarter-turn clamp locks



(A) Clamping plate surface mounted for plate thickness from 6 to 10 mm



(B) Clamping plate recessed for plate thickness > 10 mm



**Material:**

Housing steel or stainless steel.  
Nut stainless steel.

**Version:**

Housing nickel-plated or bright.  
Nut bright.

**Sample order:**

K1062.50

**Note:**

M2 or M3 mounting screws are supplied.  
Form A mounting option for plate thickness 6 to 10 mm.  
Form B mounting option for plate thickness over 10 mm.

**Drawing reference:**

- 1) plate
- 2) quarter-turn clamp lock
- 3) locating pin
- 4) nut

### KIPP Clamping plates for quarter-turn clamp locks

Order No. Form A surface mounted	Order No. Form B countersunk	Main material	D	D1	D2	D4	A	M	H2	SW	H	H1	D3 for screw to DIN 912	D5	D6	L	L1
K1062.50	K1062.501	steel	5	- / 14	25	- / 21	10,5 / -	M14X1,5 / -	8 / -	22 / -	16 / 9	- / 4,5	- / M2	15 / 14	25 / 26	3,5 / 5	- / 4
K1062.80	K1062.801	steel	8	- / 20	32	- / 26	13 / -	M20X1,5 / -	10 / -	30 / -	18 / 11	- / 5,5	- / M3	21 / 20	32 / 33	3,5 / 6	- / 5
K1062.150	K1062.1501	stainless steel	5	- / 14	25	- / 21	10,5 / -	M14X1,5 / -	8 / -	22 / -	16 / 9	- / 4,5	- / M2	15 / 14	25 / 26	3,5 / 5	- / 4
K1062.180	K1062.1801	stainless steel	8	- / 20	32	- / 26	13 / -	M20X1,5 / -	10 / -	30 / -	18 / 11	- / 5,5	- / M3	21 / 20	32 / 33	3,5 / 6	- / 5