

Slot nuts

twist-in with spring Type B

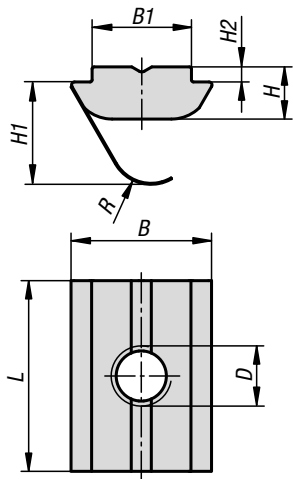


Material:
Steel.

Version:
Electro zinc-plated.

Sample order:
K1027.1004

Note:
The slot nut is twisted into the profile slot and so can be subsequently inserted into existing systems. The spring allows the nut to be fixated anywhere in the profile slot.



KIPP Slot nuts twist-in with spring Type B

| Order No. | Slot width | B | B1 | D | H | H1 | H2 | L | R |
|------------|------------|------|-----|----|-----|------|-----|----|---|
| K1027.0804 | 8 | 11,6 | 7,9 | M4 | 4,6 | 8,8 | 1 | 16 | 3 |
| K1027.0805 | 8 | 11,6 | 7,9 | M5 | 4,6 | 8,8 | 1 | 16 | 3 |
| K1027.0806 | 8 | 11,6 | 7,9 | M6 | 4,6 | 8,8 | 1 | 16 | 3 |
| K1027.0808 | 8 | 11,6 | 7,9 | M8 | 4,6 | 8,8 | 1 | 16 | 3 |
| K1027.1004 | 10 | 14 | 9,9 | M4 | 5,2 | 10,2 | 1,5 | 19 | 4 |
| K1027.1005 | 10 | 14 | 9,9 | M5 | 5,2 | 10,2 | 1,5 | 19 | 4 |
| K1027.1006 | 10 | 14 | 9,9 | M6 | 5,2 | 10,2 | 1,5 | 19 | 4 |
| K1027.1008 | 10 | 14 | 9,9 | M8 | 5,2 | 10,2 | 1,5 | 19 | 4 |