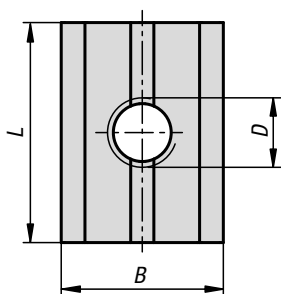
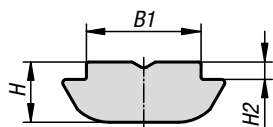


## Slot nuts

twist-in Type B



**Material:**

Steel.

**Version:**

Electro zinc-plated.

**Sample order:**

K1026.1004

**Note:**

The slot nut is twisted into the profile slot and so can be subsequently inserted into existing systems.



### KIPP Slot nuts twist-in Type B

Order No.	Slot width	B	B1	D	H	H2	L
K1026.0804	8	11,6	7,9	M4	4,6	1	16
K1026.0805	8	11,6	7,9	M5	4,6	1	16
K1026.0806	8	11,6	7,9	M6	4,6	1	16
K1026.0808	8	11,6	7,9	M8	4,6	1	16
K1026.1004	10	14	9,9	M4	5,2	1,5	19
K1026.1005	10	14	9,9	M5	5,2	1,5	19
K1026.1006	10	14	9,9	M6	5,2	1,5	19
K1026.1008	10	14	9,9	M8	5,2	1,5	19