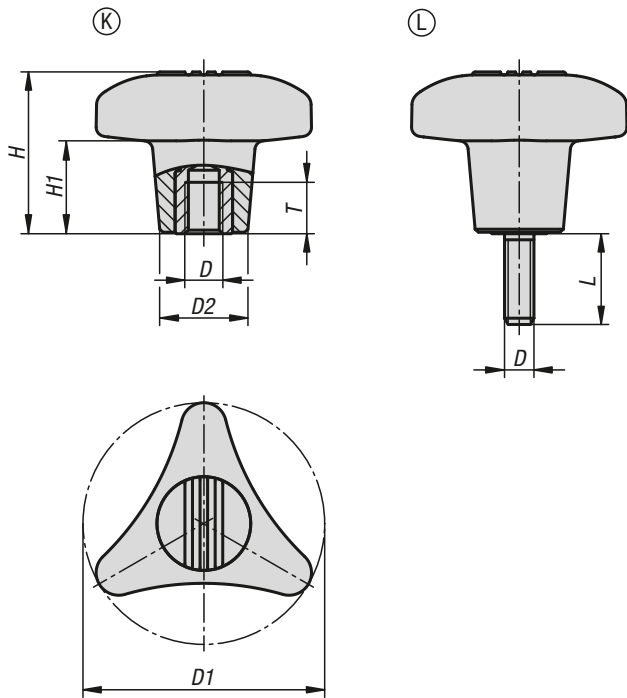


## Triangular grips



**Material:**

Grip glass-bead reinforced thermoplastic.  
Cap thermoplastic.  
Steel parts grade 5.8.

**Version:**

Grip and cap black grey (RAL 7021).  
Steel parts blue-passivated.

**Sample order:**

K1020.18010X15 (include length L)

**On request:**

Other screw lengths and colours.  
Metal parts stainless steel.

### KIPP Triangular grips, internal thread

Order No.	Form	D	D1	D2	H	H1	T
K1020.18008	K	M8	80	29,2	53,5	31	17
K1020.18010	K	M10	80	29,2	53,5	31	17
K1020.18012	K	M12	80	29,2	53,5	31	17

### KIPP Triangular grips, external thread

Order No.	Form	D	D1	D2	H	H1	L
K1020.18008X	L	M8	80	29,2	53,5	31	15/20/30/40/50
K1020.18010X	L	M10	80	29,2	53,5	31	15/20/30/40/50
K1020.18012X	L	M12	80	29,2	53,5	31	15/20/30/40/50