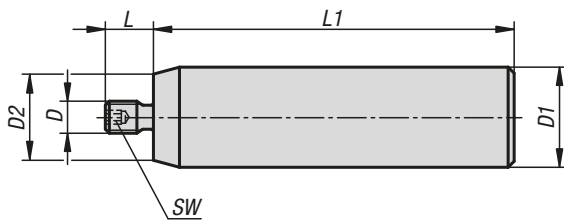
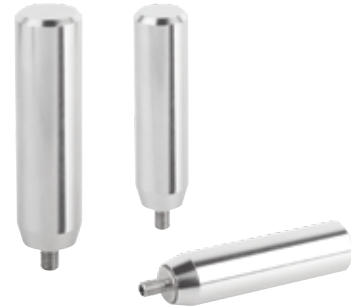


## Cylindrical grips revolving

stainless steel



**Material:**

Axis and revolving grip stainless steel 1.4305.  
Snap ring stainless steel 1.4310.

**Version:**

Bright.

**Sample order:**

K1000.105

**Assembly:**

Screw in using hexagon socket in axis.



### KIPP Cylindrical grips, revolving, stainless steel

Order No.	D	D1	D2	L	L1	SW
K1000.105	M5	16	12,5	8	60	3
K1000.206	M6	20	16,5	9	72	3
K1000.308	M8	25	21,5	12	90	3