

Crank handles stainless steel

with revolving grip



Material:

Crank stainless steel 1.4308.
Axle pin and revolving grip stainless steel 1.4305.
Retaining ring stainless steel 1.4310.

Version:

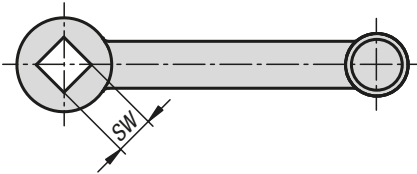
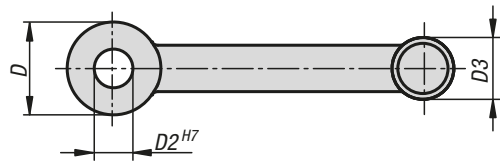
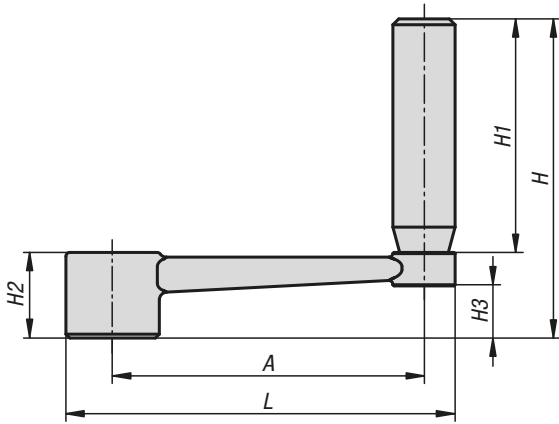
Bright.

Sample order:

K0999.3110

Note:

Similar to DIN 469.



KIPP Crank handles stainless steel with cylindrical revolving grip

Order No.	Version 1	Version 2	A	D	D2	D3	H	H1	H2	H3	L
K0999.3110	reamed hole	revolving	80	24	10	16	82	60	22	13,4	100
K0999.3212	reamed hole	revolving	100	28	12	20	98	72	26	16	124
K0999.3314	reamed hole	revolving	125	30	14	26	118	90	28	15,8	153
K0999.3417	reamed hole	revolving	160	34	17	26	122	90	32	19,6	190

Order No.	Version 1	Version 2	A	D	D3	H	H1	H2	H3	L	SW
K0999.4110	square socket	revolving	80	24	16	82	60	22	13,4	100	10
K0999.4212	square socket	revolving	100	28	20	98	72	26	16	124	12
K0999.4314	square socket	revolving	125	30	26	118	90	28	15,8	153	14
K0999.4417	square socket	revolving	160	34	26	122	90	32	19,6	190	17