

UNILOCK clamping pin size 80 mm

Item description/product images



Description

Material:

Steel.

Version:

Hardened and black oxidised.

Contact faces ground.

Note:

The UNILOCK clamping pin is suitable for clamping and positioning workpieces and fixtures. Clamping pins are screwed onto the exchange element and adapted to the various basic modules.

The following retaining forces are possible when the UNILOCK clamping pins are used together with M10, M12 or M16 fastening screws:

- Retaining force (M10) 35,000N

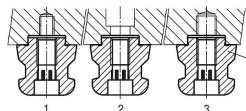
- Retaining force (M12) 50,000N

- Retaining force (M16) 75,000N

Clamping force with DIN EN ISO 4762 -12.9 cap screws.

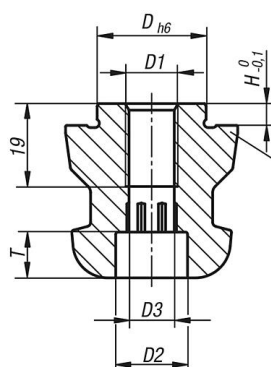
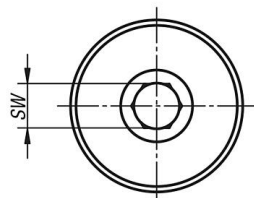
Other clamping pins in the same system size are available under K1471, K0968 and K0967 with threaded pin.

- 1 = fastening with DIN 912 screw through the clamping bolt
- 2 = fastening with DIN 912 screw through the fixture or workpiece
- 3 = fastening with grub screw DIN 913



centring clamping bolt Form A
compensation clamping bolt Form B
clamping bolt Form C

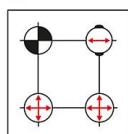
Drawings



centring clamping bolt Form A
compensation clamping bolt Form B
clamping bolt Form C

- ⊗ centring clamping bolt = Form A
- ⊖ compensation clamping bolt = Form B
- ⊕ clamping bolt = Form C

fixes in x and y axis (reference point)
fixes the free axis (bayonet pin)
clamping bolt with undersize
(no centring function, clamping only)



UNILOCK clamping pin size 80 mm

Overview of items

UNILOCK clamping pin

Order No.	Form	D	D1	D2	D3	H	T	SW
K0967.140160512	A	16	M12	16,5	10,3	5	10,5	10
K0967.140180512	A	18	M12	16,5	10,3	5	10,5	10
K0967.140220516	A	22	M16	18,5	14,2	5	12,5	17
K0967.140250512	A	25	M12	16,5	10,3	5	10,5	10
K0967.140250516	A	25	M16	18,5	14,2	5	12,5	17
K0967.240160512	B	16	M12	16,5	10,3	5	10,5	10
K0967.240180512	B	18	M12	16,5	10,3	5	10,5	10
K0967.240220516	B	22	M16	18,5	14,2	5	12,5	17
K0967.240250512	B	25	M12	16,5	10,3	5	10,5	10
K0967.240250516	B	25	M16	18,5	14,2	5	12,5	17
K0967.340160512	C	16	M12	16,5	10,3	5	10,5	10
K0967.340180512	C	18	M12	16,5	10,3	5	10,5	10
K0967.340220516	C	22	M16	18,5	14,2	5	12,5	17
K0967.340250512	C	25	M12	16,5	10,3	5	10,5	10
K0967.340250516	C	25	M16	18,5	14,2	5	12,5	17