

Locating cylinder

Ball Lock

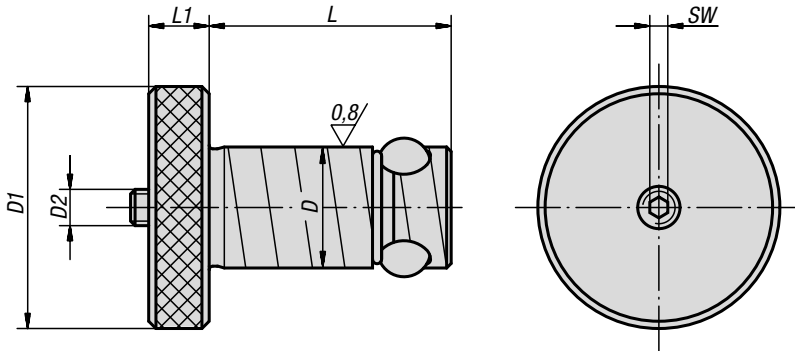


Material:
Locating cylinder carbon steel.
Balls roller bearing steel.

Version:
Locating cylinder tempered, black oxidised.
Balls hardened, bright.

Sample order:
K0935.16020

Note:
By tightening the thrust screw (D2) the centre ball is pressed downwards and in turn forces the three locking balls outwards, where they locked in the receiver bush.
With this easy to use system machine set-up times are up to twelve times shorter than when conventional methods are used.

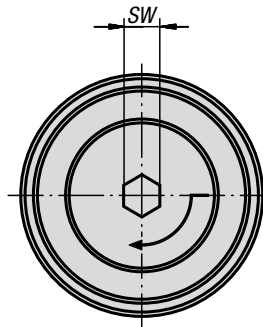
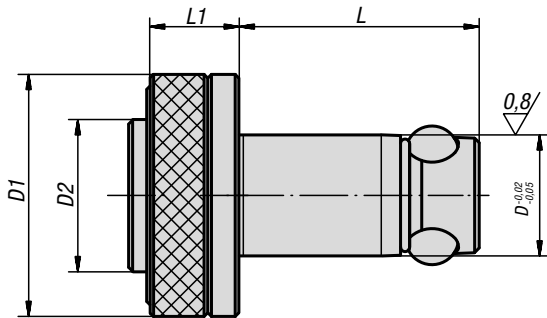


KIPP Locating cylinders Ball lock

| Order No. | Grid plate thickness $\pm 0,05$ | D | D1 | D2 | L | L1 | SW | Holding force F kN | Tightening torque max. Nm | Order No. Repair Kit |
|-------------|---------------------------------|----|----|-----|------|----|-----|--------------------|---------------------------|----------------------|
| K0935.13013 | 13 | 13 | 22 | M5 | 27,6 | 6 | 2,5 | 3,3 | 1 | K0935.913013 |
| K0935.13020 | 20 | 13 | 22 | M5 | 34,6 | 6 | 2,5 | 3,3 | 1 | K0935.913020 |
| K0935.16020 | 20 | 16 | 32 | M6 | 36,5 | 8 | 3 | 5,3 | 3 | K0935.916020 |
| K0935.16025 | 25 | 16 | 32 | M6 | 41,5 | 8 | 3 | 5,3 | 3 | K0935.916025 |
| K0935.20020 | 20 | 20 | 40 | M6 | 39,5 | 10 | 3 | 13,3 | 4 | K0935.920020 |
| K0935.20025 | 25 | 20 | 40 | M6 | 44,5 | 10 | 3 | 13,3 | 4 | K0935.920025 |
| K0935.25020 | 20 | 25 | 45 | M8 | 44 | 10 | 4 | 30 | 9 | K0935.925020 |
| K0935.25025 | 25 | 25 | 45 | M8 | 49 | 10 | 4 | 30 | 9 | K0935.925025 |
| K0935.30020 | 20 | 30 | 50 | M10 | 49 | 13 | 5 | 44 | 15 | K0935.930020 |
| K0935.30025 | 25 | 30 | 50 | M10 | 54 | 13 | 5 | 44 | 15 | K0935.930025 |
| K0935.35020 | 20 | 35 | 60 | M12 | 51 | 13 | 6 | 68 | 25 | K0935.935020 |
| K0935.35025 | 25 | 35 | 60 | M12 | 56 | 13 | 6 | 68 | 25 | K0935.935025 |
| K0935.35040 | 40 | 35 | 60 | M12 | 71 | 13 | 6 | 68 | 25 | K0935.935040 |
| K0935.35050 | 50 | 35 | 60 | M12 | 81 | 13 | 6 | 68 | 25 | K0935.935050 |
| K0935.50020 | 20 | 50 | 75 | M20 | 64 | 20 | 10 | 88 | 50 | K0935.950020 |
| K0935.50025 | 25 | 50 | 75 | M20 | 69 | 20 | 10 | 88 | 50 | K0935.950025 |
| K0935.50040 | 40 | 50 | 75 | M20 | 84 | 20 | 10 | 88 | 50 | K0935.950040 |
| K0935.50050 | 50 | 50 | 75 | M20 | 94 | 20 | 10 | 88 | 50 | K0935.950050 |

Locating cylinder

with quick clamping system



Material:

Locating cylinder carbon steel.
Balls roller bearing steel.

Version:

Locating cylinder tempered, black oxidised.
Balls hardened, bright.

Sample order:

K0935.112013

Note:

Locating cylinder with quick-clamp system for extra timesaving during setups.

Insert the locating cylinder into the receiving hole and press the button. The three balls are pushed out and position the components. By tightening the set screw a 1/4 turn using an hexagonal key, the components are positively and securely held.



KIPP Locating cylinder with quick clamping system

| Order No. | Grid plate thickness $\pm 0,05$ | D | D1 | D2 | L | L1 | SW | Holding force F kN | Tightening torque max. Nm |
|--------------|---------------------------------|----|----|----|------|----|----|--------------------|---------------------------|
| K0935.120025 | 25 | 20 | 40 | 25 | 44,5 | 15 | 6 | 8 | 2 |
| K0935.116020 | 20 | 16 | 32 | 20 | 36,5 | 15 | 6 | 8 | 2 |
| K0935.113020 | 20 | 13 | 25 | 16 | 34,6 | 12 | 4 | 4 | 1 |
| K0935.113013 | 13 | 13 | 25 | 16 | 27,6 | 12 | 4 | 4 | 1 |
| K0935.120020 | 20 | 20 | 40 | 25 | 39,5 | 15 | 6 | 8 | 2 |
| K0935.116025 | 25 | 16 | 32 | 20 | 41,5 | 15 | 6 | 8 | 2 |