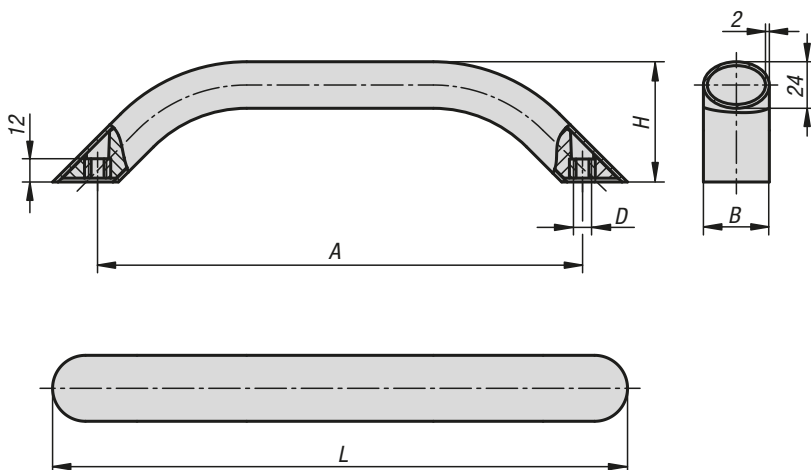


Tubular handles oval, aluminium



These tubular handles impresses with a combination of solid appearance, high stability and extreme lightness. The patented fastening system enables the handles to be installed from the rear with no screws visible from the front. With its easy-to-clean and abrasion-resistant surface, the handle also blends in perfectly with its surroundings.

Material:

Tube oval aluminium EN AW-6060.
Tapped bush steel.

Version:

Anodised natural tone or powder-coated black, ruby red RAL 3003 or traffic red RAL 3020.

Sample order:

K0796.400083

Note:

Mounting fasteners are not supplied. Cap screws with LONG-LOK thread lock are recommended for secure and long-term stability.

Assembly:

The tubular handle can be mounted from the rear. DIN socket head screws or hexagon head bolts with thread size M8 are provided for this purpose.

Advantages:

Solid appearance combined with low weight

Timeless elegant design.

Ergonomic handle shape.

Patented fastening system for rear mounting.

Accessories:

K0869 socket head screws, DIN 912 / DIN EN ISO 4762
LONG-LOK thread lock

K0869 socket head screws, DIN 912 / DIN EN ISO 4762

K0871 hexagon head bolts DIN 933 / DIN EN ISO 4017

KIPP Tubular handles oval, aluminium

Order No. natural anodised	Order No. black powder-coated	Order No. ruby red RAL3003 powder-coated	Order No. traffic red RAL 3020 powder-coated	A	B	D	H	L	Load capacity N
K0796.250083	K0796.250081	K0796.2500827	K0796.2500884	250	34	M8	62	296,4	1000
K0796.300083	K0796.300081	K0796.3000827	K0796.3000884	300	34	M8	62	346,4	1000
K0796.400083	K0796.400081	K0796.4000827	K0796.4000884	400	34	M8	62	446,4	1000
K0796.500083	K0796.500081	K0796.5000827	K0796.5000884	500	34	M8	62	546,4	1000