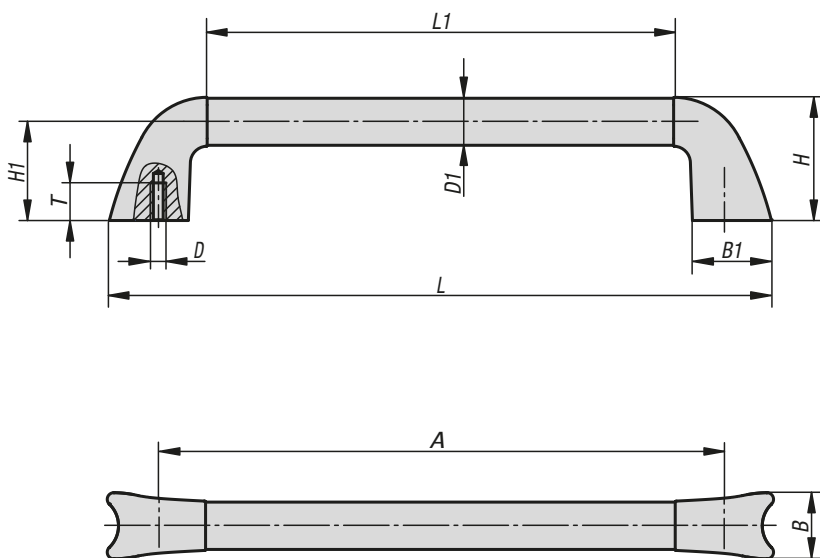


Tubular handles carbon



Material:

Grip legs stainless steel 1.4308.
Tubular grip carbon fibre reinforced plastic (CFP).

Version:

Grip legs polished.
Tubular grip CFP composition, clear varnished.

Sample order:

K0781.250251

Note:

The grip is fastened using stainless steel DIN EN ISO 4762 socket head screws.

KIPP Tubular handles carbon

| Order No. | A | B | B1 | D | D1 | H | H1 | L | L1 | T | Load capacity N |
|--------------|-----|------|------|----|----|----|----|-----|-----|----|-----------------|
| K0781.250251 | 250 | 34,8 | 41,6 | M6 | 25 | 64 | 51 | 301 | 198 | 20 | 1000 |
| K0781.300251 | 300 | 34,8 | 41,6 | M6 | 25 | 64 | 51 | 351 | 248 | 20 | 1000 |
| K0781.350251 | 350 | 34,8 | 41,6 | M6 | 25 | 64 | 51 | 401 | 298 | 20 | 1000 |
| K0781.350351 | 350 | 47,7 | 55 | M6 | 35 | 84 | 66 | 424 | 286 | 20 | 1000 |
| K0781.400351 | 400 | 47,7 | 55 | M6 | 35 | 84 | 66 | 474 | 336 | 20 | 1000 |
| K0781.450351 | 450 | 47,7 | 55 | M6 | 35 | 84 | 66 | 524 | 386 | 20 | 1000 |