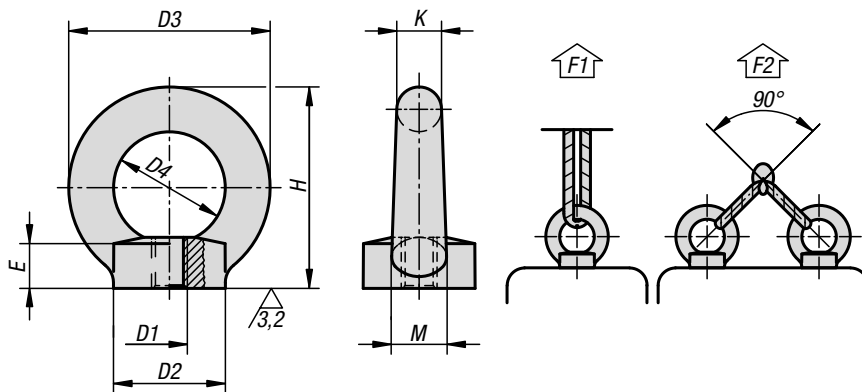


## Ring nuts

DIN 582



**Material:**

1.1141 steel, 1.4301 stainless steel or 1.4401 stainless steel.

**Version:**

Drop forged.  
Steel, bright.  
Steel electro zinc-plated.

**Sample order:**

K0768.10

**Note:**

For high demand hoisting and carrying tasks in safety-relevant areas (machine construction, load handling equipment, lifting tackle).  
The CE mark is impressed into the ring bolt.  
F2 permissible load under max. 45° per ring bolt.

**On request:**

Certificate of conformity.

### KIPP Ring nuts DIN 582

Order No. steel bright	Order No. steel galvanised	D1	D2	D3	D4	E	H	K	M	F1 max. kN	F2 max. kN
K0768.08	K0768.008	M8	20	36	20	8,5	36	8	10	1,4	0,95
K0768.10	K0768.010	M10	25	45	25	10	45	10	12	2,3	1,7
K0768.12	K0768.012	M12	30	54	30	11	53	12	14	3,4	2,4
K0768.16	K0768.016	M16	35	63	35	13	62	14	16	7	5
K0768.20	K0768.020	M20	40	72	40	16	71	16	19	12	8,3
K0768.24	K0768.024	M24	50	90	50	20	90	20	24	18	12,7

Order No. stainless steel 1.4301	Order No. stainless steel 1.4401	D1	D2	D3	D4	E	H	K	M	F1 max. kN	F2 max. kN
K0768.108	K0768.208	M8	20	36	20	8,5	36	8	10	1,4	0,95
K0768.110	K0768.210	M10	25	45	25	10	45	10	12	2,3	1,7
K0768.112	K0768.212	M12	30	54	30	11	53	12	14	3,4	2,4
K0768.116	K0768.216	M16	35	63	35	13	62	14	16	7	5
K0768.120	K0768.220	M20	40	72	40	16	71	16	19	12	8,3
K0768.124	K0768.224	M24	50	90	50	20	90	20	24	18	12,7