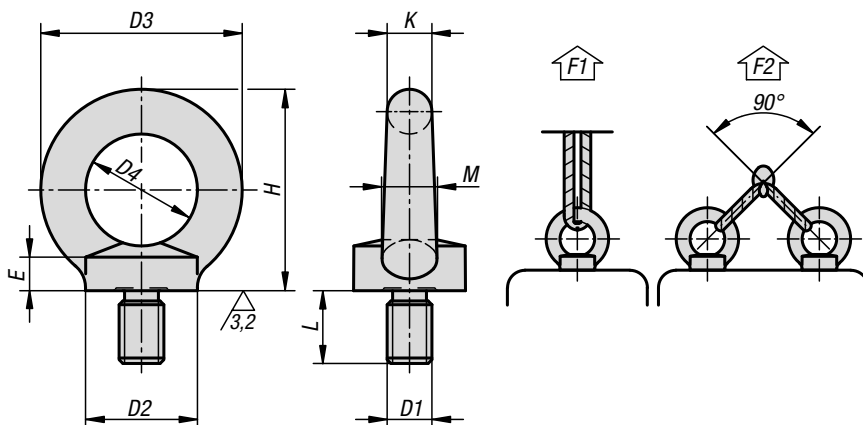


## Ring bolts

DIN 580



**Material:**

1.1141 steel, 1.4301 stainless steel or 1.4401 stainless steel.

**Version:**

Drop forged.  
Steel, bright.  
Steel electro zinc-plated.

**Sample order:**

K0767.20

**Note:**

For high demand hoisting and carrying tasks in safety-relevant areas (machine construction, load handling equipment, lifting tackle).

The CE mark is impressed into the ring bolt.

F2 permissible load under max. 45° per ring bolt.

**On request:**

Certificate of conformity.

### KIPP Ring bolts DIN 580

Order No. steel bright	Order No. steel galvanised	D1	L	D2	D3	D4	E	H	K	M	F1 max. kN	F2 max. kN
K0767.08	K0767.008	M8	13	20	36	20	6	36	8	10	1,4	0,95
K0767.10	K0767.010	M10	17	25	45	25	8	45	10	12	2,3	1,7
K0767.12	K0767.012	M12	20,5	30	54	30	10	53	12	14	3,4	2,4
K0767.16	K0767.016	M16	27	35	63	35	12	62	14	16	7	5
K0767.20	K0767.020	M20	30	40	72	40	14	71	16	19	12	8,3
K0767.24	K0767.024	M24	36	50	90	50	18	90	20	24	18	12,7

Order No. stainless steel 1.4301	Order No. stainless steel 1.4401	D1	L	D2	D3	D4	E	H	K	M	F1 max. kN	F2 max. kN
K0767.108	K0767.208	M8	13	20	36	20	6	36	8	10	1,4	0,95
K0767.110	K0767.210	M10	17	25	45	25	8	45	10	12	2,3	1,7
K0767.112	K0767.212	M12	20,5	30	54	30	10	53	12	14	3,4	2,4
K0767.116	K0767.216	M16	27	35	63	35	12	62	14	16	7	5
K0767.120	K0767.220	M20	30	40	72	40	14	71	16	19	12	8,3
K0767.124	K0767.224	M24	36	50	90	50	18	90	20	24	18	12,7