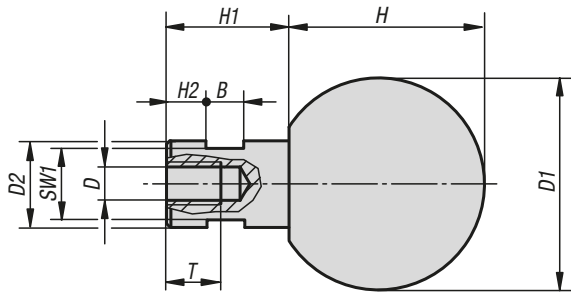


## Ball grips revolving



**Material:**

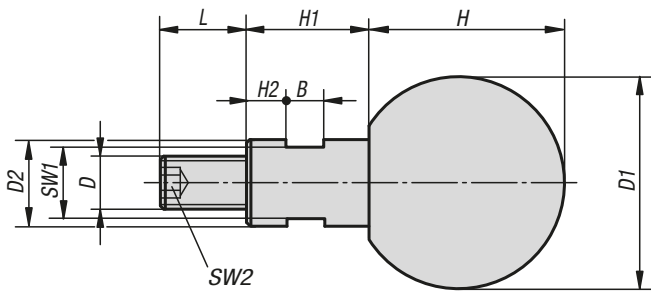
Ball thermoset PF 31.  
Bush and screw steel or stainless steel 1.4305.

**Version:**

Ball black glossy.  
Steel trivalent blue passivated.  
Stainless steel bright.

**Sample order:**

K0726.061



### KIPP Ball grips revolving with female thread

Order No. steel	Order No. stainless steel	B	D	D1	D2	H	H1	H2	SW1	T
K0726.060	K0726.1060	5	M6	25	10	22,5	15	5	8	12,5
K0726.080	K0726.1080	6	M8	32	13	29,5	19	6	10	15
K0726.100	K0726.1100	8	M10	40	16	37	24	8	13	19
K0726.120	K0726.1120	10	M12	50	20	47	31	12	17	21,5

### KIPP Ball grips revolving with male thread

Order No. steel	Order No. stainless steel	B	D	D1	D2	H	H1	H2	L	SW1	SW2
K0726.061	K0726.1061	5	M6	25	10	22,5	15	5	11	8	3
K0726.081	K0726.1081	6	M8	32	13	29,5	19	6	13	10	4
K0726.101	K0726.1101	8	M10	40	16	37	24	8	14	13	5
K0726.121	K0726.1121	10	M12	50	20	47	31	12	21	17	6