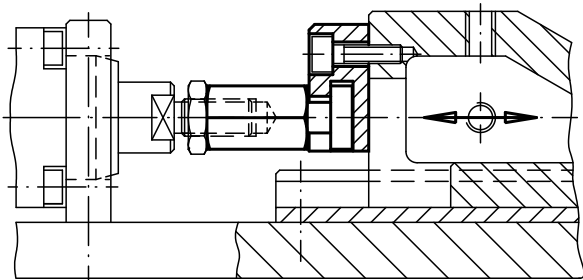
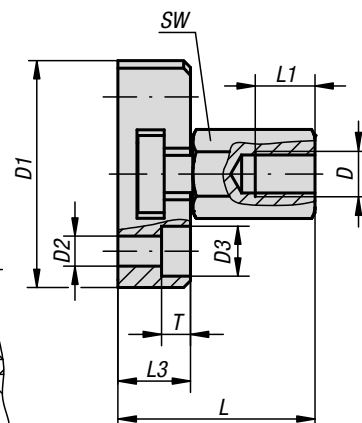
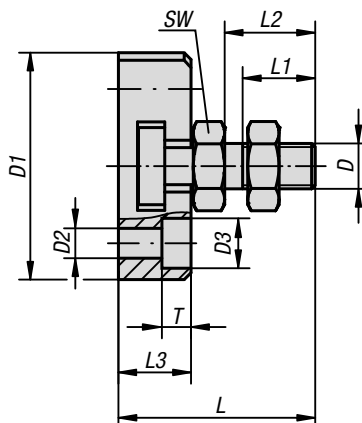
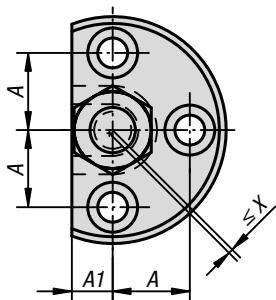


## Quick-fit couplings

with radial offset compensation and mounting flange



**Material:**  
Coupling part and steel flange.  
Nut (DIN 439), grade 8.8.

**Version:**  
Coupling part and flange tempered and phosphated.  
Nut black oxidised.

**Sample order:**  
K0710.20351

**Note:**  
Space saving quick-fit couplings with radial offset compensation suitable for multiple applications, e.g. as a link between a piston rod and a linear-movement unit. Assembly and disassembly of this simple, solid and two-part coupling is with a T-slot, a manual re-adjustment is not necessary. The quick-fit coupling can be linked to all commonly used pneumatic and hydraulic lifting cylinders via the connecting thread.

**The quick-fit coupling does not transmit any torque.**

### KIPP Quick-fit couplings with radial offset compensation and mounting flange

Order No.	Version	D	D1	D2	D3	A	A1	L	L1 min.	L2	L3	T	SW	radial offset compensation X max.	Max. permissible tensile and compressive stress kN
K0710.06	internal thread	M6	42	5,5	10	14	7	30,5	11	-	11	5,4	10	0,6	2,5
K0710.08	internal thread	M8	48	6,6	11	16	8	35,5	13,5	-	13	6,4	13	0,7	4,5
K0710.10	internal thread	M10	50	6,6	11	17	9	43,2	15	-	16	6,4	17	0,7	6,5
K0710.101	internal thread	M10x1,25	50	6,6	11	17	9	43,2	15	-	16	6,4	17	0,7	6,5
K0710.12	internal thread	M12	55	6,6	11	19	10	53,2	17,5	-	20,5	6,4	19	0,8	10
K0710.121	internal thread	M12x1,25	55	6,6	11	19	10	53,2	17,5	-	20,5	6,4	19	0,8	10
K0710.16	internal thread	M16	65	9	15	22,5	12,5	64	22	-	23	8,5	24	1	18
K0710.161	internal thread	M16x1,5	65	9	15	22,5	12,5	64	22	-	23	8,5	24	1	18
K0710.20	internal thread	M20	80	11	18	28	17	74	25	-	26	10	30	1	30
K0710.201	internal thread	M20x1,5	80	11	18	28	17	74	25	-	26	10	30	1	30
K0710.0614	external thread	M6	42	5,5	10	14	7	30,5	11	14	11	5,4	10	0,6	2,5
K0710.0817	external thread	M8	48	6,6	11	16	8	35,5	13,5	17	13	6,4	13	0,7	4,5
K0710.1020	external thread	M10	50	6,6	11	17	9	43,2	16	20	16	6,4	17	0,7	6,5
K0710.10201	external thread	M10x1,25	50	6,6	11	17	9	43,2	16	20	16	6,4	17	0,7	6,5
K0710.1225	external thread	M12	55	6,6	11	19	10	53,2	21	25	20,5	6,4	19	0,8	10
K0710.12251	external thread	M12x1,25	55	6,6	11	19	10	53,2	21	25	20,5	6,4	19	0,8	10
K0710.1630	external thread	M16	65	9	15	22,5	12,5	64	25	30	23	8,5	24	1	18
K0710.16301	external thread	M16x1,5	65	9	15	22,5	12,5	64	25	30	23	8,5	24	1	18
K0710.2035	external thread	M20	80	11	18	28	17	74	29	35	26	10	30	1	30
K0710.20351	external thread	M20x1,5	80	11	18	28	17	74	29	35	26	10	30	1	30