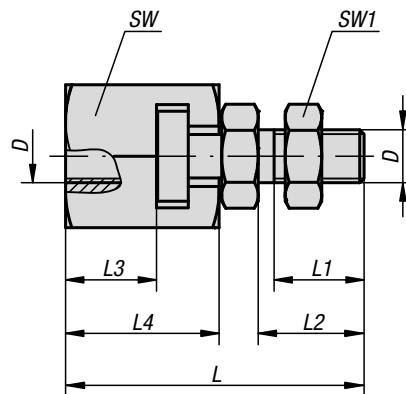
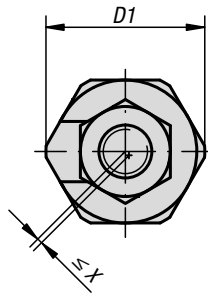


Quick-fit couplings

with radial offset compensation

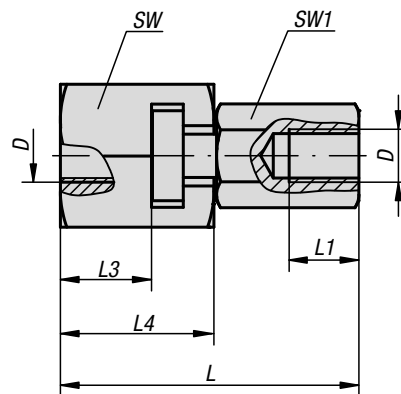
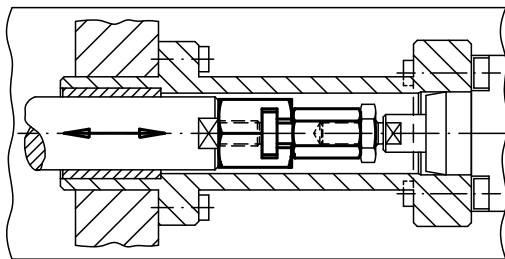


Material:
Coupling part and claw in steel.
Nut (DIN 439) in steel, grade 8.8.

Version:
Coupling part and flange tempered and phosphated.
Nut black oxidised.

Sample order:
K0709.16

Note:
Quick-fit couplings with radial offset compensation for multiple applications, e.g. as a link between a piston rod and a linear-movement unit. Assembly and disassembly of this simple, solid and two-part coupling is carried out by means of a T-slot; a manual re-adjustment is not necessary. The quick-fit coupling can be linked to all commonly used pneumatic and hydraulic cylinders via the connecting thread.



The quick-fit coupling does not transmit any torque.

KIPP Quick-fit couplings with radial offset compensation

Order No.	Version	D	D1	L	L1 min.	L2	L3 min.	L4	SW	SW1	radial offset compensation X max.	Max. permissible tensile and compressive stress kN
K0709.06	internal thread	M6	21	37,5	11	-	9	18	19	10	0,6	2,5
K0709.08	internal thread	M8	26	45	13,5	-	11,5	22,5	24	13	0,7	4,5
K0709.10	internal thread	M10	30	56,2	15	-	16	29	27	17	0,7	6,5
K0709.101	internal thread	M10x1,25	30	56,2	15	-	16	29	27	17	0,7	6,5
K0709.12	internal thread	M12	32,5	66,7	17,5	-	17	34	30	19	0,8	10
K0709.121	internal thread	M12x1,25	32,5	66,7	17,5	-	17	34	30	19	0,8	10
K0709.16	internal thread	M16	39	83	22	-	23	42	36	24	1	18
K0709.161	internal thread	M16x1,5	39	83	22	-	23	42	36	24	1	18
K0709.20	internal thread	M20	44	93,5	25	-	23,5	45,5	41	30	1	30
K0709.201	internal thread	M20x1,5	44	93,5	25	-	23,5	45,5	41	30	1	30
K0709.0614	external thread	M6	21	37,5	11	14	9	18	19	10	0,6	2,5
K0709.0817	external thread	M8	26	45	13,5	17	11,5	22,5	24	13	0,7	4,5
K0709.1020	external thread	M10	30	56,2	16	20	16	29	27	17	0,7	6,5
K0709.10201	external thread	M10x1,25	30	56,2	16	20	16	29	27	17	0,7	6,5
K0709.1225	external thread	M12	32,5	66,7	21	25	17	34	30	19	0,8	10
K0709.12251	external thread	M12x1,25	32,5	66,7	21	25	17	34	30	19	0,8	10
K0709.1630	external thread	M16	39	83	25	30	23	42	36	24	1	18
K0709.16301	external thread	M16x1,5	39	83	25	30	23	42	36	24	1	18
K0709.2035	external thread	M20	44	93,5	29	35	23,5	45,5	41	30	1	30
K0709.20351	external thread	M20x1,5	44	93,5	29	35	23,5	45,5	41	30	1	30