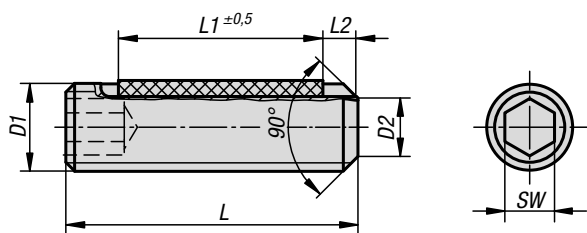
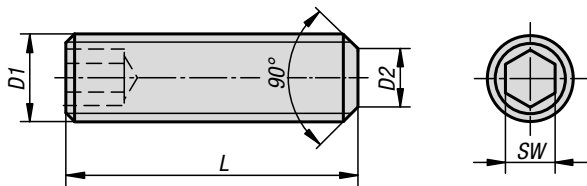


## Grub screws with flat point

hexagon socket DIN EN ISO 4026



**Material:**

Steel or stainless steel (A 2).

Thread lock nylon.

**Version:**

Steel class 45 H, black.

Stainless steel A2-70, bright.

**Sample order:**

K0707.110X20 (include length L)

**Drawing reference:**

L2 = approx. 2x thread pitch

### KIPP Grub screws with flat point, hexagon socket DIN EN ISO 4026

Order No.	Main material	D1	D2	L	SW
K0707.03X	steel	M3	2	5/6/8/10/12/16/20	1,5
K0707.04X	steel	M4	2,5	5/6/8/10/12/16/20/25	2
K0707.05X	steel	M5	3,5	5/6/8/10/12/16/20/25/30	2,5
K0707.06X	steel	M6	4	6/8/10/12/16/20/25/30/35/40/45/50/60	3
K0707.08X	steel	M8	5,5	8/10/12/16/20/25/30/35/40/45/50/60/70/80	4
K0707.10X	steel	M10	7	10/12/16/20/25/30/35/40/45/50/60/70/80/90/100	5
K0707.103X	stainless steel	M3	2	5/6/8/10/12	1,5
K0707.104X	stainless steel	M4	2,5	5/6/8/10/12/16/20	2
K0707.105X	stainless steel	M5	3,5	5/6/8/10/12/16/20/25/30	2,5
K0707.106X	stainless steel	M6	4	6/8/10/12/16/20/25/30/35/40	3
K0707.108X	stainless steel	M8	5,5	8/10/12/16/20/25/30/35/40/45/50	4
K0707.110X	stainless steel	M10	7	10/12/16/20/25/30/35/40/45/50	5

### KIPP Grub screws with hex socket and flat point, DIN EN ISO 4026, with thread lock

Order No.	Version 2	Main material	D1	D2	L	L1	SW
K0707.203X	with thread lock	steel	M3	2	5/6/8/10/12	2/3/4/4/4	1,5
K0707.204X	with thread lock	steel	M4	2,5	5/6/8/10/12/16	2/2,5/3,5/5/5/5	2
K0707.205X	with thread lock	steel	M5	3,5	5/6/8/10/12/16	2/3/3,5/3,5/5/6	2,5
K0707.206X	with thread lock	steel	M6	4	6/8/10/12/16/20	2,5/3/3,5/5/7/7	3
K0707.208X	with thread lock	steel	M8	5,5	8/10/12/16/20	3/3,5/5/8/8	4
K0707.210X	with thread lock	steel	M10	7	10/12/16/20	5/5/9/9	5
K0707.303X	with thread lock	stainless steel	M3	2	5/6/8/10/12	2/3/4/4/4	1,5
K0707.304X	with thread lock	stainless steel	M4	2,5	5/6/8/10/12/16	2/2,5/3,5/5/5/5	2
K0707.305X	with thread lock	stainless steel	M5	3,5	5/6/8/10/12/16	2/3/3,5/3,5/5/6	2,5
K0707.306X	with thread lock	stainless steel	M6	4	6/8/10/12/16/20	2,5/3/3,5/5/7/7	3
K0707.308X	with thread lock	stainless steel	M8	5,5	8/10/12/16/20	3/3,5/5/8/8	4
K0707.310X	with thread lock	stainless steel	M10	7	10/12/16/20	5/5/9/9	5