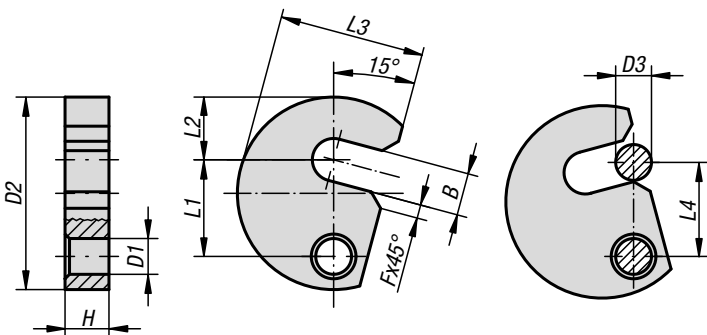


C-washers captive

DIN 6371



Material:
Carbon steel 1.0760.

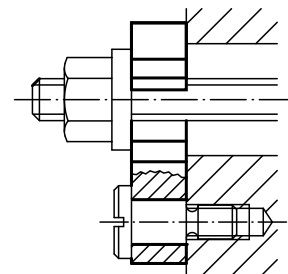
Version:
Nitrided and black oxidised.

Sample order:
K0703.12

Note:
K0703.14 is not standard. Suitable shoulder screws see K0704.

KIPP C-washers captive DIN 6371

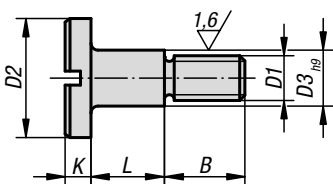
Order No.	B	D1	D2	D3	F	H	L1	L2	L3	L4
K0703.06	7,5	9	38	6	3	9,8	19,6	11	29	19
K0703.08	9,5	9	43	8	3	9,8	21,6	14	32,5	21
K0703.10	11,5	9	48	10	3	9,8	23,6	17	36,5	23
K0703.12	13,5	11	61	12	3	11,8	29,6	22	45	29
K0703.14	15,5	11	65	14	3	11,8	31,6	23	49	31
K0703.16	17,5	11	68	16	3	11,8	33,6	25	50	33
K0703.20	21,5	11	74	20	4	11,8	36,6	28	55	36



K0704

Shoulder screws with slotted flat head

DIN 923



Material:
Steel.

Version:
Black oxidised, grade 5.8.

Sample order:
K0704.08

Note:
For use with captive C-washers K0703.

KIPP Shoulder screws with slotted flat head DIN 923

Order No.	D1	D2	D3	L	B	K
K0704.06	M6	13	8	10 +0,15/+0,07	9	3,1
K0704.08	M8	16	10	12 +0,2/+0,1	11	3,8
K0704.10	M10	20	13	16 +0,2/+0,1	13,5	4,6

