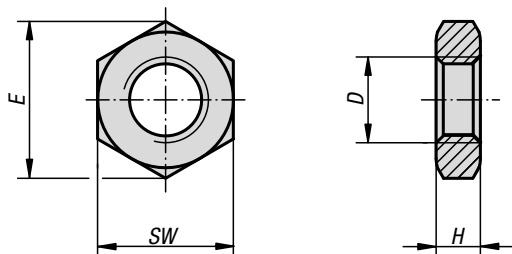


Hexagon nuts thin

DIN 439

**Material:**

Steel, stainless steel A2 or stainless steel A4.

Version:Steel grade 04, electro zinc-plated or black oxidised.
Stainless steel A2, bright.
Stainless steel A4, bright.**Sample order:**

K0700.10

Note:

These hexagon nuts are used in screw connections exposed to limited loads, e.g. as a locknut for clevis joints or rod ends.

KIPP Hexagon nuts thin DIN 439

Order No. steel black oxidised	Order No. steel galvanised	Version 2	D	E	H	SW
K0700.205	K0700.05	RH thread	M5	8,79	2,7	8
K0700.206	K0700.06	RH thread	M6	11,05	3,2	10
K0700.2063	K0700.006	RH thread	M6X0,75	11,05	3,2	10
K0700.208	K0700.08	RH thread	M8	14,38	4	13
K0700.2083	K0700.008	RH thread	M8X1	14,38	4	13
K0700.210	K0700.10	RH thread	M10	18,9	5	17
K0700.2103	K0700.103	RH thread	M10X1	18,9	5	17
-	K0700.104	RH thread	M10X1,25	18,9	5	17
K0700.212	K0700.12	RH thread	M12	21,1	6	19
-	K0700.123	RH thread	M12X1,25	21,1	6	19
K0700.2124	K0700.124	RH thread	M12X1,5	21,1	6	19
-	K0700.14	RH thread	M14	24,49	7	22
K0700.216	K0700.16	RH thread	M16	26,76	8	24
K0700.2163	K0700.163	RH thread	M16x1,5	26,76	8	24
-	K0700.183	RH thread	M18x1,5	29,56	9	27
-	K0700.20	RH thread	M20	32,95	10	30
K0700.2203	K0700.203	RH thread	M20X1,5	32,95	10	30
-	K0700.223	RH thread	M22x1,5	36,9	10	32
-	K0700.24	RH thread	M24	39,55	12	36
K0700.2243	-	RH thread	M24x2	39,6	12	36
-	K0700.30	RH thread	M30	50,85	15	46
-	K0700.061	LH thread	M6	11,05	3,2	10
-	K0700.081	LH thread	M8	14,38	4	13
-	K0700.101	LH thread	M10	18,9	5	17
-	K0700.1031	LH thread	M10X1	18,9	5	17
-	K0700.1041	LH thread	M10X1,25	18,9	5	17
-	K0700.121	LH thread	M12	21,1	6	19
-	K0700.1231	LH thread	M12X1,25	21,1	6	19
-	K0700.1241	LH thread	M12X1,5	21,1	6	19
-	K0700.161	LH thread	M16	26,76	8	24
-	K0700.2031	LH thread	M20X1,5	32,95	10	30
-	K0700.2231	LH thread	M22x1,5	36,9	10	32

Hexagon nuts thin

DIN 439



KIPP Hexagon nuts thin DIN 439

Order No. stainless steel A2	Order No. stainless steel A4	Version 2	D	E	H	SW
K0700.105	K0700.605	RH thread	M5	8,79	2,7	8
K0700.106	K0700.606	RH thread	M6	11,05	3,2	10
K0700.1062	K0700.6062	RH thread	M6X0,75	11,05	3,2	10
K0700.108	K0700.608	RH thread	M8	14,38	4	13
K0700.1083	K0700.6083	RH thread	M8X1	14,38	4	13
K0700.110	K0700.610	RH thread	M10	18,9	5	17
K0700.1103	K0700.6103	RH thread	M10X1	18,9	5	17
K0700.1104	K0700.6104	RH thread	M10X1,25	18,9	5	17
K0700.112	K0700.612	RH thread	M12	21,1	6	19
K0700.1123	K0700.6123	RH thread	M12X1,25	21,1	6	19
K0700.1124	K0700.6124	RH thread	M12X1,5	21,1	6	19
K0700.114	K0700.614	RH thread	M14	24,49	7	22
K0700.116	K0700.616	RH thread	M16	26,76	8	24
K0700.1163	K0700.6163	RH thread	M16x1,5	26,76	8	24
K0700.120	K0700.620	RH thread	M20	32,95	10	30
K0700.1203	K0700.6203	RH thread	M20X1,5	32,95	10	30
K0700.1223	K0700.6223	RH thread	M22x1,5	36,9	10	32
K0700.1244	K0700.6244	RH thread	M24	39,55	12	36
K0700.1243	K0700.6243	RH thread	M24x2	39,6	12	36
K0700.1061	-	LH thread	M6	11,05	3,2	10
K0700.1081	-	LH thread	M8	14,38	4	13
K0700.1101	-	LH thread	M10	18,9	5	17
K0700.11031	-	LH thread	M10X1	18,9	5	17
K0700.11041	-	LH thread	M10X1,25	18,9	5	17
K0700.1121	-	LH thread	M12	21,1	6	19
K0700.11231	-	LH thread	M12X1,25	21,1	6	19
K0700.11241	-	LH thread	M12X1,5	21,1	6	19
K0700.1161	-	LH thread	M16	26,76	8	24
K0700.12031	-	LH thread	M20X1,5	32,95	10	30
K0700.12231	-	LH thread	M22x1,5	36,9	10	32