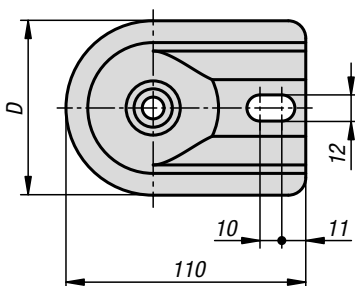
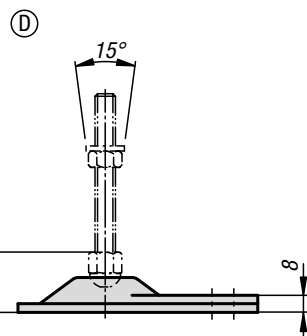
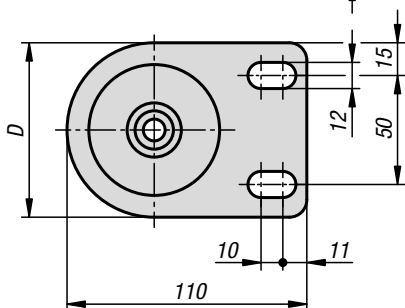
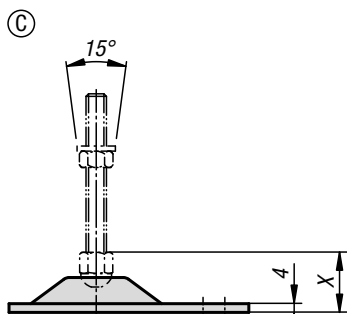
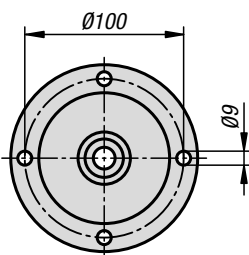
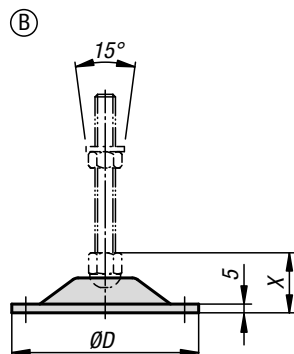
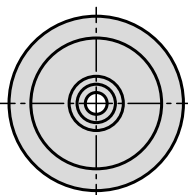
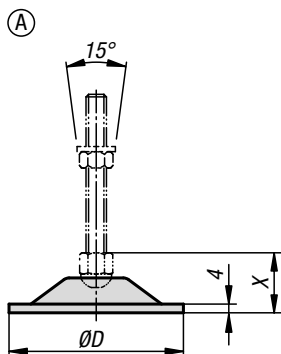


Levelling feet plates

steel or stainless steel



①
A, C, D: M8/M10 = 31 mm
M12 = 32 mm
M16 = 36 mm
M20 = 39 mm

B: M8/M10 = 46 mm
M12 = 48 mm
M16 = 51 mm
M20 = 54 mm

Material:
Plate steel or stainless steel 1.4301.

Version:
Steel chrome-plated.
Stainless steel polished.

Sample order:
K0672.10801 K0672.10801 and K0669.080501
assembled

Note for ordering:
If the levelling foot plate and the threaded spindle are to be supplied assembled, please add the suffix "**assembled**" to the order number for the plate and spindle (e.g. K0672.10801 and K0669.080501 **assembled**).

Note:
Levelling feet consist of a plate and a threaded spindle. Any plate can be combined with any threaded spindle. For matching threaded spindles, see K0669.

Drawing reference:
1) X with spindle size:

KIPP Levelling feet plates steel or stainless steel

Order No. steel	Order No. stainless steel	Form	D	Load rating max. kN
K0672.10801	K0672.10802	A	80	20
K0672.21251	K0672.21252	B	125	40
K0672.30801	K0672.30802	C	80	20
K0672.40801	K0672.40802	D	80	20