

## Cam-action indexing plungers



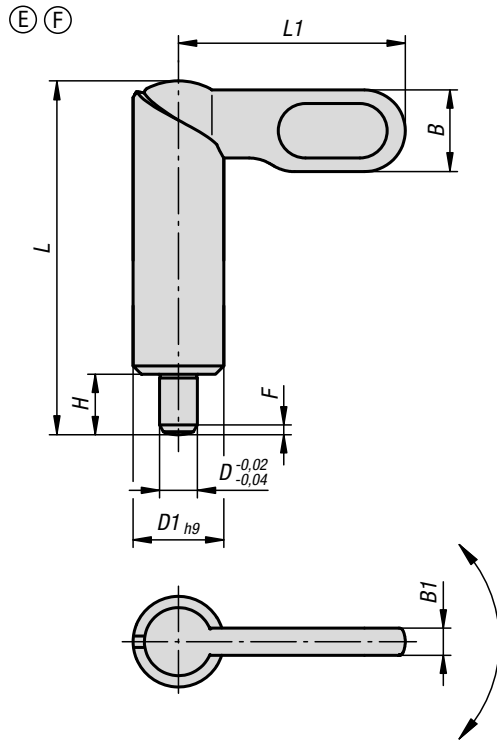
**Material:**  
 Handle 1.0503.  
 Pin steel grade 5.8.  
 Sleeve 1.0403.

**Version:**  
 Black oxidised.  
 Pin hardened and ground.

**Sample order:**  
 K0639.091220

**Note:**  
 Cam-action indexing plungers are used when the indexing pin should not project all the time. Turning the handle through 180° retracts the pin. A notch ensures that the handle remains in this position.

**Drawing reference:**  
 Form E: grip uncoated, smooth sleeve  
 Form F: grip powder-coated, smooth sleeve



### KIPP Cam-action indexing plungers

Order No. Form E	Order No. Form F	D	D1	L	L1	B	B1	H	Fx30°	Spring force initial pressure F1 approx. N	Spring force final pressure F2 approx. N
K0639.080410	K0639.090410	4	10	38	25	9	3	6	1	8	14
K0639.080510	K0639.090510	5	10	38	25	9	3	6	1,3	8	14
K0639.080610	K0639.090610	6	10	38	25	9	3	6	1,8	8	14
K0639.080512	K0639.090512	5	12	46,8	30	10,8	3,6	8	1,3	8	15
K0639.080612	K0639.090612	6	12	46,8	30	10,8	3,6	8	1,8	8	15
K0639.080812	K0639.090812	8	12	46,8	30	10,8	3,6	8	2,3	8	15
K0639.080616	K0639.090616	6	16	60,4	40	14,4	4,8	10	1,8	15	35
K0639.080816	K0639.090816	8	16	60,4	40	14,4	4,8	10	2,3	15	35
K0639.081016	K0639.091016	10	16	60,4	40	14,4	4,8	10	2,8	15	35
K0639.080820	K0639.090820	8	20	70	50	18	6	12	2,3	20	60
K0639.081020	K0639.091020	10	20	70	50	18	6	12	2,8	20	60
K0639.081220	K0639.091220	12	20	70	50	18	6	12	3	20	60