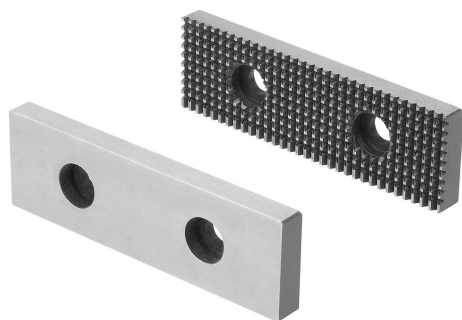


Jaw pads for centric vice 65-80-125 mm

Item description/product images



Description

Material:
Steel hardened.

Version:
Clamping faces ground.

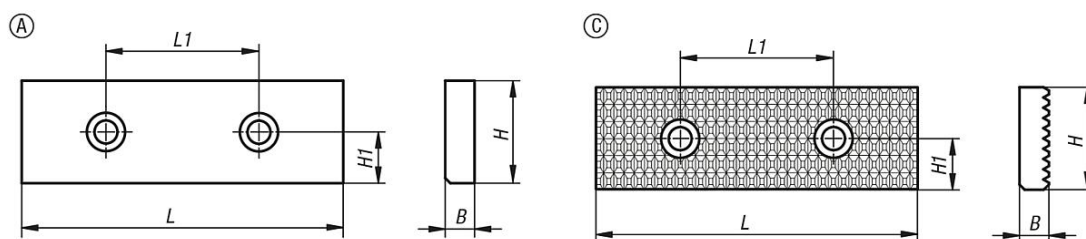
Note:
These jaw pads can be used for clamping various workpiece types. Depending on the pad used, rough or pre-machined workpieces can be held.
The jaw pads are screwed onto the attachment jaws.

Suitable for K1236, K1237

Drawing reference:

Form A: smooth
Form C: serrated

Drawings



Overview of items

Jaw pads for centric vice 65-80-125 mm

Order No.	Form	B	H	H1	L	L1
K0598.0651	A	7,5	20	10	66	34
K0598.0801	A	7,5	25	12,5	81	38
K0598.1251	A	11,5	40	20	126	60
K0598.0653	C	7,5	20	10	66	34
K0598.0803	C	7,5	25	12,5	81	38
K0598.1253	C	11,5	40	20	126	60