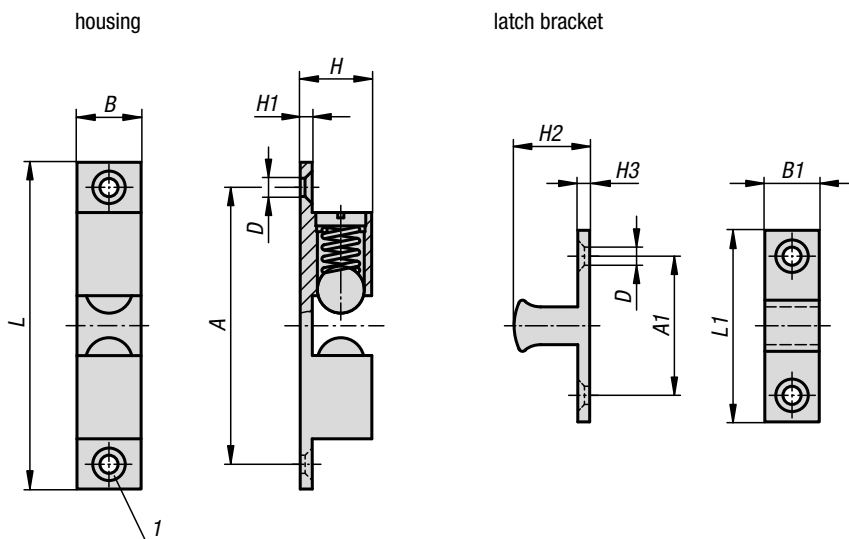


Double ball catches



Material:
Housing and latch brass, die-cast zinc or stainless steel 1.4401.
Balls and springs stainless steel.

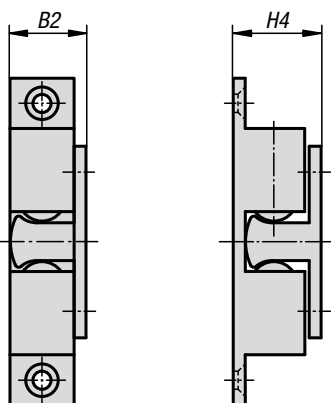
Version:
Brass and die-cast zinc chromed.
Stainless steel abrasive blasted.
Balls and springs bright stainless steel.

Sample order:
K0583.50

Note:
Quick catch for various applications such as holding doors, hatches, screens etc. closed. The double ball catch consists of a housing and a latch bracket that engages between the two balls. The latch bracket can engage from the front or the side. The engagement pressure is adjustable.

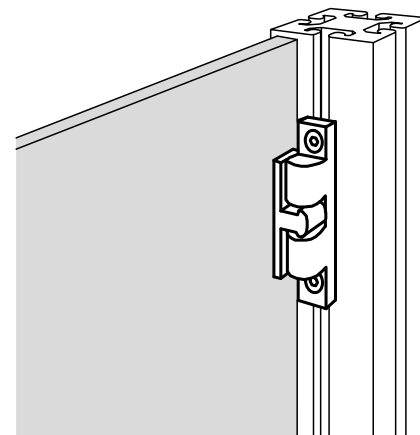
Drawing reference:
1) counterbore DIN 74-A

catch



from side

from front



KIPP Double ball catches

| Order No. | Main material | Surface finish body | A | A1 | B | B1 | B2 | D | H | H1 | H2 | H3 | H4 | L | L1 | Clamping force ca. N | Spring strength |
|-----------|-----------------|---------------------|------|------|-----|------|------|-----|------|-----|------|-----|------|------|------|----------------------|-----------------|
| K0583.50 | brass | chromed | 39,8 | 19,8 | 8,8 | 7,6 | 10,8 | 3,8 | 10,6 | 2 | 11,2 | 2 | 13,2 | 49 | 28,8 | 35±5 | standard |
| K0583.60 | brass | chromed | 50 | 23,5 | 11 | 9 | 13,5 | 4,8 | 13,2 | 2,4 | 13,5 | 2,2 | 15,5 | 60 | 35 | 30±7 | standard |
| K0583.70 | brass | chromed | 58 | 30 | 13 | 12 | 15,2 | 4,8 | 15 | 2,4 | 15,7 | 2,2 | 18,1 | 68,4 | 40,2 | 25±5 | standard |
| K0583.322 | stainless steel | blasted | 25 | 11 | 8 | 8 | 10 | 3,2 | 9 | 2 | 8,5 | 2 | 11,5 | 32 | 18 | 8 | standard |
| K0583.432 | stainless steel | blasted | 35 | 16 | 8 | 7,5 | 10,5 | 3,2 | 10 | 2,5 | 11 | 2,5 | 13,5 | 43 | 25 | 13 | standard |
| K0583.502 | stainless steel | blasted | 40 | 20 | 10 | 9 | 12,9 | 4,2 | 12,2 | 2,9 | 13,2 | 2,9 | 15,9 | 50 | 30 | 18 | standard |
| K0583.702 | stainless steel | blasted | 60 | 30 | 13 | 10,5 | 17 | 4,2 | 17 | 4 | 19 | 4 | 23 | 70 | 42 | 38 | standard |
| K0583.430 | zinc | chromed | 35 | 16 | 8 | 7,5 | 10,5 | 3,2 | 10 | 2,5 | 11 | 2,5 | 13,5 | 43 | 25 | 13 | standard |
| K0583.500 | zinc | chromed | 40 | 20 | 10 | 9 | 12,9 | 4,2 | 12,2 | 2,9 | 13,2 | 2,9 | 15,9 | 50 | 30 | 18 | standard |
| K0583.700 | zinc | chromed | 60 | 30 | 13 | 10,5 | 17 | 4,2 | 17 | 4 | 19 | 4 | 23 | 70 | 42 | 38 | standard |