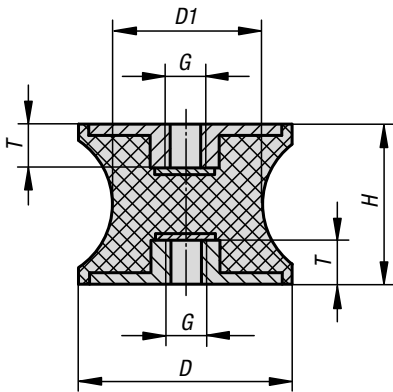


Rubber buffers

type CT tapered



Material:

Metal parts, steel, grade 5.6.
Elastomer natural rubber, medium hardness, Shore 57A.

Version:

Steel electro zinc-plated.

Sample order:

K0570.01501557

Note:

These rubber buffers are widely used construction elements for elastic mounting. They are used, among other things, as mountings for aggregates, motors, compressors, pumps and testing machinery. Rubber buffers with tapered rubber contour reduce high edge loads of the rubber by radial deflection and so increase the components service life.

Temperature range:

-30 °C to +80 °C

On request:

Other Shore grades.



KIPP Rubber buffers type CT tapered

Order No.	D	D1	H	G	T	Spring stiffness N/mm	Load N
K0570.01501557	15	12	15	M4	4	111	122
K0570.02001557	20	14	15	M6	6	227	227
K0570.03002057	30	22	20	M8	8	252	504
K0570.04003057	40	33	30	M8	8	199	796
K0570.04004857	40	20	48	M8	8	111	555
K0570.05003057	50	40	30	M10	10	499	998
K0570.07504057	75	50	40	M12	12	597	2030