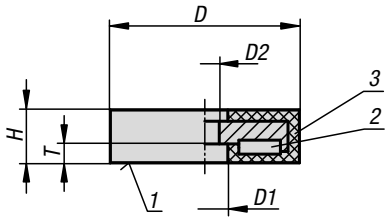
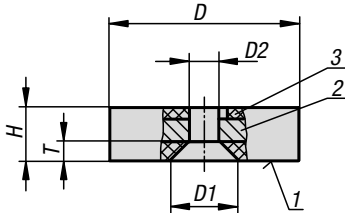


Magnets shallow pot with through hole

NdFeB, with rubber protective jacket



K0565.03



Material:

Housing, steel.
Magnetic core NdFeB (neodym).
Protective rubber jacket, synthetic rubber.

Version:

Housing, electro zinc-plated.
Black protective rubber jacket.

Sample order:

K0565.01

Note:

Shallow pot magnets, shielded system. With rubber protective jacket for protecting sensitive surfaces. The coefficient of friction is increased by the rubber jacket so that high lateral friction is achieved.

Temperature range:

max. 60°C.

Drawing reference:

- 1) magnetic face
- 2) magnet
- 3) rubber

KIPP Magnets shallow pot with through hole NdFeB, with rubber protective jacket

Order No.	D	D1	D2	H	T	Magnetic force N
K0565.01	22	8,2	4	6	3,5	35
K0565.02	31	9	6	6	3,5	75
K0565.03	43	12,8	7,5	6	4,2	85
K0565.04	57	25,3	8	7,6	3,3	175
K0565.05	66	22	5,5	8,5	3,2	210