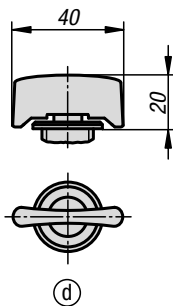
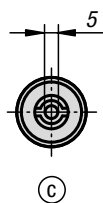
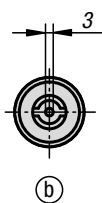
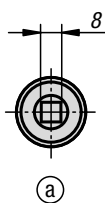
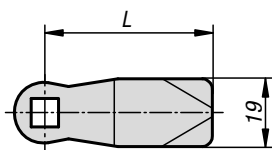
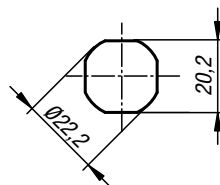
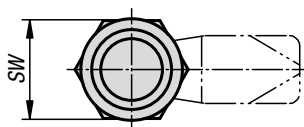
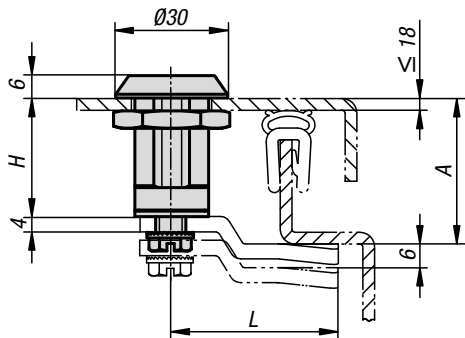


Compression latches



Material:
Housing and actuator die-cast zinc.
Flat seal rubber.
Tongue steel.

Version:
Housing and actuator trivalent passivated.
Tongue electro zinc-plated.

Sample order:
Compression latch K0529.18321
Tongue K0530.145X320
(include tongue gap "A")

Note:
Compression latches are primarily used for doors and housings that require a high pressure on the seal. Right or left deployment. The locking direction is always clockwise.

Vibration-proof, water and dust tight according to IP65. Please order the desired tongue type separately. Every tongue can be combined with every housing.

Function:
Turning the actuator 90° brings the tongue into the closed position. Turning the actuator another 90° draws the tongue into the frame increasing the pressure. The compression gap is 6 mm. The fastening nut is an earthing nut with teeth one side.

Accessories:
Key K0535

Drawing reference:
Actuation:
a) square 8 mm
b) double lug 3 mm
c) double lug 5 mm
d) toggle

KIPP Compression latches

Order No.	Actuation	H	SW
K0529.18321	square 8 mm	32	27
K0529.30321	grip	32	27
K0529.43321	double lug 3 mm	32	27
K0529.45321	double lug 5 mm	32	27

KIPP Tongue for compression latches

Order No.	A	L
K0530.145X	32/35/38/44	45
K0530.151X	32	51