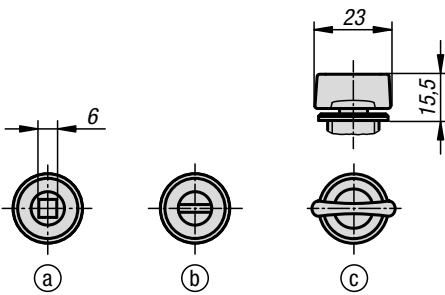
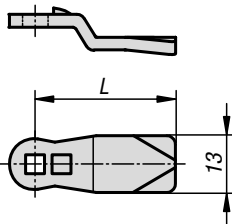
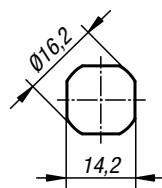
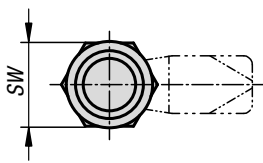
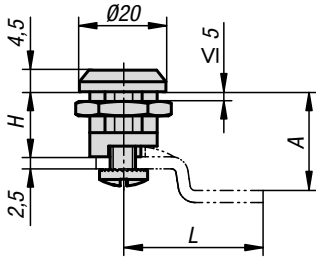


Quarter-turn locks

small version



Material:

Housing and actuator die-cast zinc.
Tongue steel.

Version:

Housing and actuator trivalent passivated.
Wing-handle version powder-coated.
Tongue electro zinc-plated.

Sample order:

Quarter turn lock K0518.16131
Tongue K0519.125X075

Note:

Small quarter turn lock with spring-loaded tongue.
Right or left deployment. The lock can be installed pre-assembled. The fastening nut is an earthing nut with teeth one side.

Please order the desired tongue type separately.
Every tongue can be combined with every housing.

Accessories:

Key K0535

Drawing reference:

Actuation:
a) square 6 mm
b) slot
c) wing grip



KIPP Quarter-turn locks small version

Order No.	Actuation	H	SW
K0518.16131	square 6 mm	13,5	20
K0518.20131	slot	13,5	20
K0518.30132	grip	13,5	20

KIPP Tongue for quarter-turn locks

Order No.	A	L
K0519.125X075	7,5	25
K0519.125X135	13,5	25
K0519.125X195	19,5	25