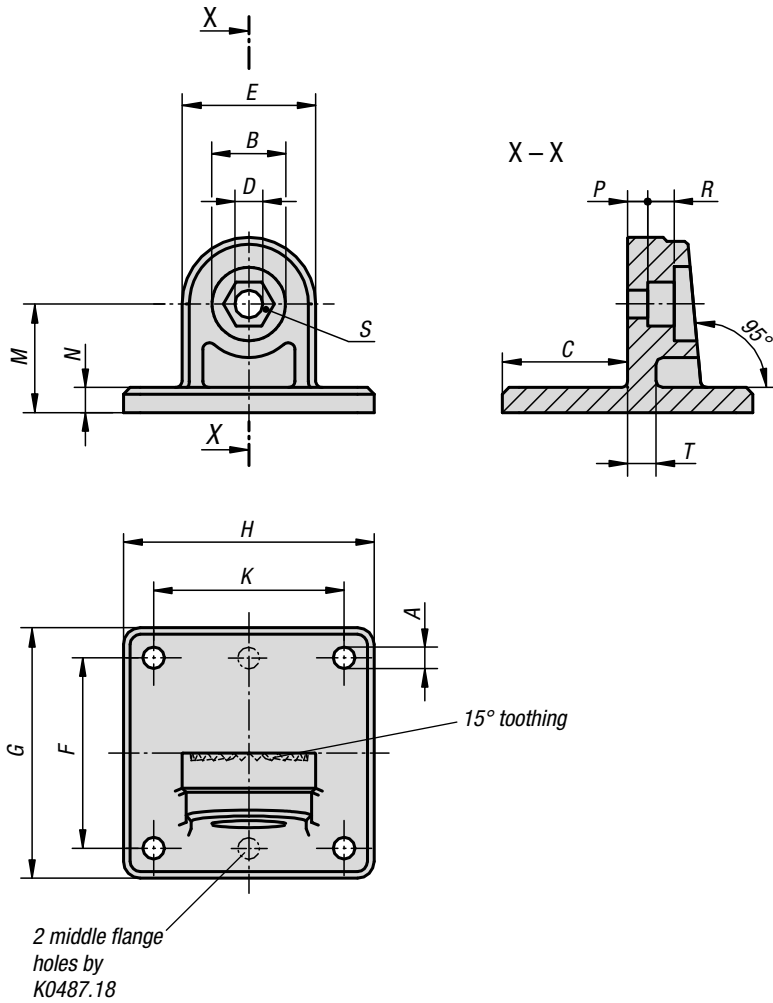


Tube clamps swivel base

sunken teeth, plastic



Material:

Thermoplastic.
DIN 7984 screws and DIN 985 nuts steel.

Version:

Black.
Screws and nuts electro zinc-plated.

Sample order:

K0487.18

Note:

Swivel clamp bases can be combined with swivel half clamps with raised teeth (K0485) to make a complete swivel clamp.

On request:

Plastic clamping levers for tightening.

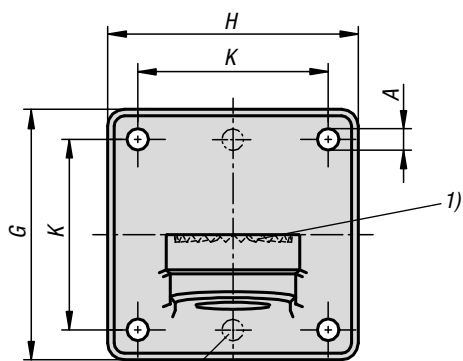
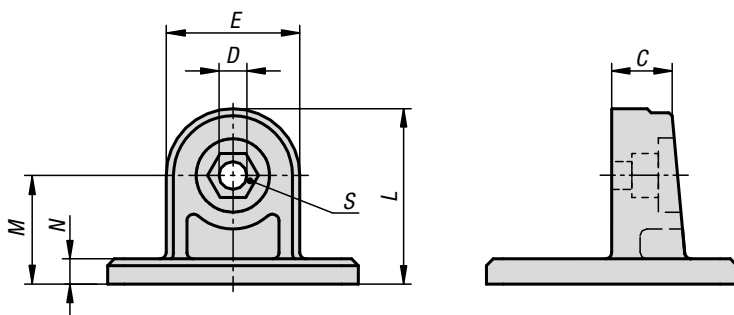


KIPP Tube clamps swivel base, sunken teeth, plastic

Order No.	A	B	C	D	E	F	G	H	K	M	N	P	R	S	T
K0487.18	5,3 (2x)	15	25	6,1	25	40	50	35	-	20	5	4,5	5,5	M6-DIN 985	5
K0487.30	6,5 (4x)	22	37,5	8,1	40	60	75	75	60	32,5	7,5	6,6	8,2	M8-DIN 985	7

Tube clamps swivel base

aluminium, with sunken teeth



2 middle flange holes by K0487.518

Material:

Cast aluminium.
Screws and nuts steel.

Version:

Vibratory ground.
Screws and nuts electro zinc-plated.

Sample order:

K0487.518

Note:

Swivel half clamps with sunken teeth can be combined with swivel half clamps with raised teeth (K0485) to make a complete swivel clamp.

Max. torque when tightening the lockscrew:

- M6: 10 Nm.
- M8: 25 Nm.
- M10: 50 Nm.

On request:

Clamping levers for tightening.

Accessories:

- Hex nut DIN 985
- Hex head bolt DIN 933
- Cap screw DIN 6912

Drawing reference:

1) 15° toothing

KIPP Tube clamps swivel base, aluminium, with sunken teeth

Order No.	A	C	D	E	G	H	K	L	M	N	S
K0487.518	5,3 (2x)	13	7	25	50	35	38	32,5	20	5	M6
K0487.530	6,5 (4x)	16	9	40	75	75	57	52,5	33	7,5	M8
K0487.540	8,5 (4x)	22	11	56	100	100	76	72	44	10	M10