

## Tube clamps swivel half

raised teeth, plastic



**Material:**

Thermoplastic.  
DIN 7984 screws and DIN 985 nuts steel.

**Version:**

Black.  
Screws and nuts electro zinc-plated.

**Sample order:**

K0485.18

**Note:**

Swivel half clamps with raised teeth can be combined with swivel half clamps with sunken teeth (K0484, K0486 or K0487) to make a complete swivel clamp.

The standard size for round tubes is Ø18 mm or Ø30 mm. Use reducer sleeves K0492 if smaller tubes are to be clamped or a conversion from round to square tubes is required.

**Assembly:**

K0485.18 and K0484.18 can be combined using a DIN 985 M6 nut (K1148) and a DIN 6912 M6x18 cap screw (K1160).

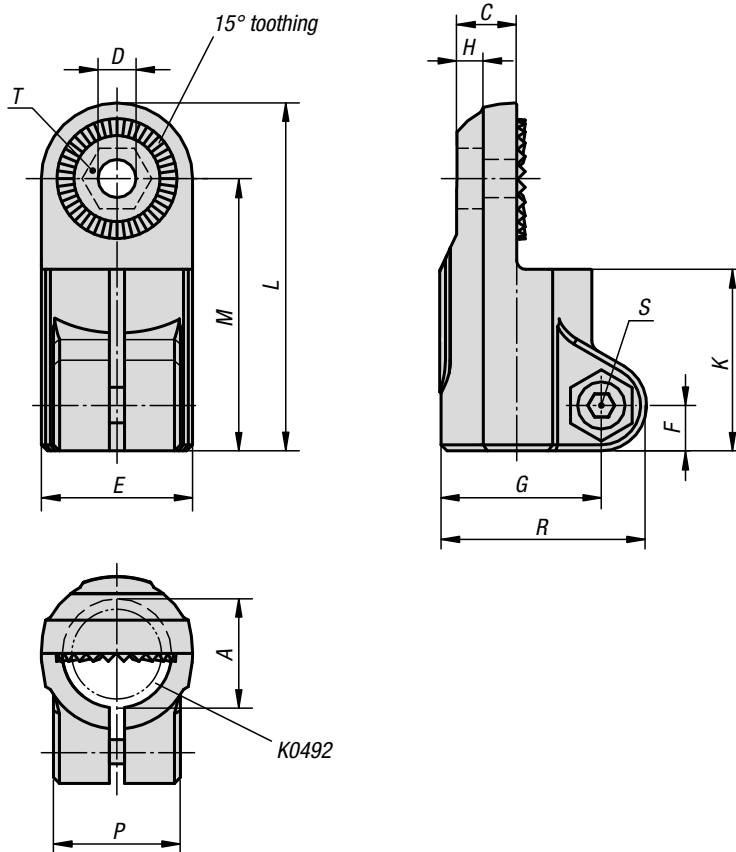
K0485.30 and K0484.30 can be combined using a DIN 985 M8 nut (K1148) and a DIN 6912 M8x25 cap screw (K1160).

**On request:**

Plastic clamping levers for tightening.

**Accessories:**

- Reducer sleeves K0492
- Round and square tubes K0493

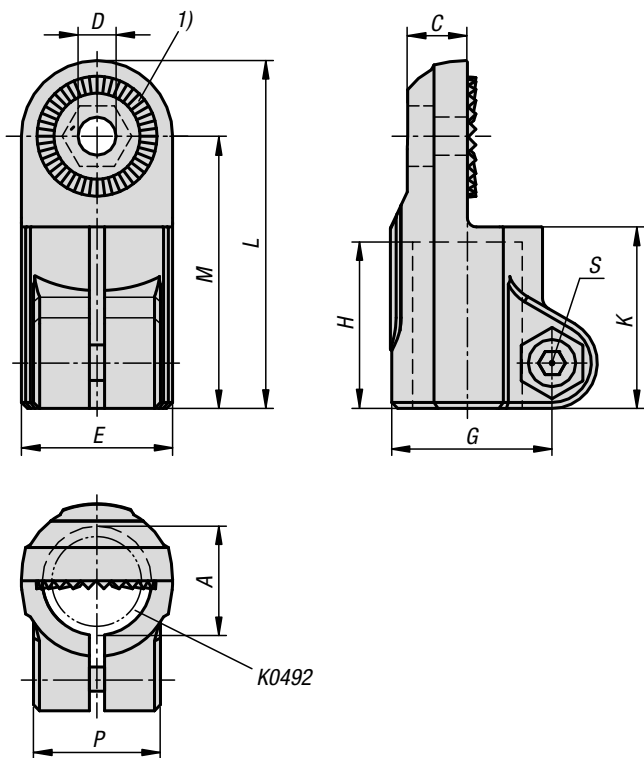


**KIPP Tube clamps swivel half, raised teeth, plastic**

Order No.	A	C	D	E	F	G	H	K	L	M	P	R	S	T
K0485.18	18	9,9	6,1	25	7,5	26,5	5,9	30	57,5	45	21	34	M6x18	M6-DIN 985
K0485.30	30	16,5	8,1	40	11	41,5	6,5	45	88	68	28,5	52,5	M8x25	M8-DIN 985

## Tube clamps swivel half

aluminium, with raised teeth



**Material:**  
Cast aluminium.  
Screws and nuts steel.

**Version:**  
Vibratory ground.  
Screws and nuts electro zinc-plated.

**Sample order:**  
K0485.516

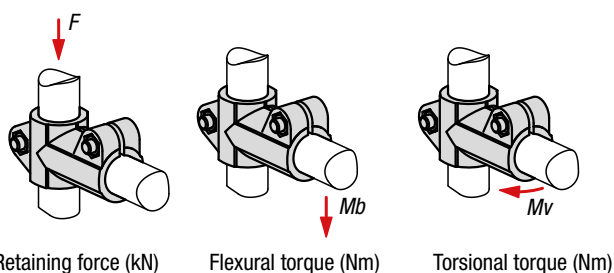
**Note:**  
Swivel half clamps with raised teeth can be combined with swivel half clamps with sunken teeth (K0484, K0486 or K0487) to make a complete swivel clamp.

Max. torque when tightening the lock screw:  
M6: 10 Nm.  
M8: 25 Nm.  
M10: 50 Nm.

**On request:**  
Clamping levers for tightening.

**Accessories:**  
- Hex nut DIN 985  
- Hex head bolt DIN 933  
- Cap screw DIN 6912

**Drawing reference:**  
1) 15° toothing



### KIPP Tube clamps swivel half, aluminium, with raised teeth

Order No.	A	C	D	E	G	H	K	L	M	P	S	F kN	Mb (Nm)	Mv (Nm)
K0485.512	12,1	10,5	7,5	26	29,4	25	30	57	44	21	M6	3,6	28	9
K0485.514	14,1	10,5	7,5	26	29,4	25	30	57	44	21	M6	3,6	28	9
K0485.516	16,1	10,5	7,5	26	29,4	25	30	57	44	21	M6	3,6	28	9
K0485.518	18,1	10,5	7,5	26	29,4	25	30	57	44	21	M6	3,6	28	9
K0485.520	20	16	9	40	40	45	50	93	73	33	M8	4,9	91	94
K0485.525	25,1	16	9	40	40	45	50	93	73	33	M8	4,9	91	94
K0485.530	30,1	16	9	40	40	45	50	93	73	33	M8	4,9	91	94
K0485.540	40,2	22	11	56	56	60	68	128	100	48	M10	6	267	181