

## Levelling feet ECO threaded spindles

steel or stainless steel



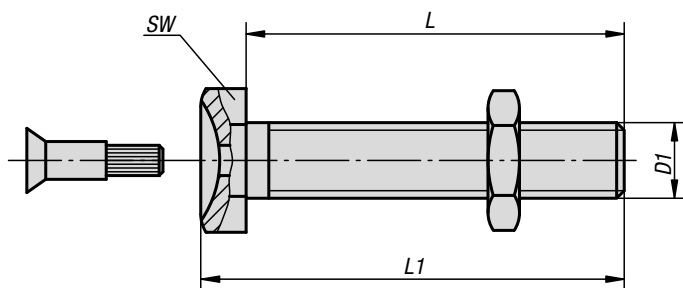
**Material:**  
Steel or 1.4305 stainless steel

**Version:**  
Steel trivalent blue passivated.  
Stainless steel, bright.

**Sample order:**  
K0429.101201  
K0429.101201 and K0428.10301 **assembled**

**Note for ordering:**  
If the threaded spindle and the levelling foot plate are to be supplied assembled, please add the suffix "**assembled**" to the order number for the spindle and plate.  
(e.g. K0429.080251 and K0428.10301 **assembled**.)

**Note:**  
ECO levelling feet consist of a threaded spindle and a plate. Any threaded spindle can be combined with any plate.



### KIPP Levelling feet ECO threaded spindles steel or stainless steel

Order No. steel	Order No. stainless steel	D1	L	L1	SW	Load rating max. kN
K0429.080251	K0429.080252	M8	25	29,5	13	3,5
K0429.080401	K0429.080402	M8	40	44,5	13	3,5
K0429.080501	K0429.080502	M8	50	54,5	13	3,5
K0429.080701	K0429.080702	M8	70	74,5	13	3,5
K0429.080801	K0429.080802	M8	80	84,5	13	3,5
K0429.081001	K0429.081002	M8	100	104,5	13	3,5
K0429.081201	K0429.081202	M8	120	124,5	13	3,5
K0429.100251	K0429.100252	M10	25	30	17	4,7
K0429.100401	K0429.100402	M10	40	45	17	4,7
K0429.100501	K0429.100502	M10	50	55	17	4,7
K0429.100701	K0429.100702	M10	70	75	17	4,7
K0429.100801	K0429.100802	M10	80	85	17	4,7
K0429.101001	K0429.101002	M10	100	105	17	4,7
K0429.101201	K0429.101202	M10	120	125	17	4,7
K0429.120251	K0429.120252	M12	25	31	19	7,7
K0429.120401	K0429.120402	M12	40	46	19	7,7
K0429.120501	K0429.120502	M12	50	56	19	7,7
K0429.120701	K0429.120702	M12	70	76	19	7,7
K0429.120801	K0429.120802	M12	80	86	19	7,7
K0429.121001	K0429.121002	M12	100	106	19	7,7
K0429.121201	K0429.121202	M12	120	126	19	7,7
K0429.160501	K0429.160502	M16	50	58,5	24	14,5
K0429.161001	K0429.161002	M16	100	108,5	24	14,5
K0429.161501	K0429.161502	M16	150	158,5	24	14,5