

Levelling feet plates ECO

die-cast zinc, stainless steel or plastic



Material:

Plate thermoplastic, die-cast zinc or stainless steel 1.4305.

Anti-slip plate thermoplastic elastomer.

Version:

Thermoplastic plate black.

Die-cast zinc plate blue electro zinc-plated.

Stainless steel plate bright.

Sample order:

K0428.10303

K0428.10303 and K0429.080801 **assembled**

Note for ordering:

If the levelling foot plate and the threaded spindle are to be supplied assembled, please add the suffix **“assembled”** to the order number for the plate and spindle.

(e.g. K0428.10303 and K0429.080801 **“assembled”**.)

Note:

ECO levelling feet consist of a plate and a threaded spindle. Any plate can be combined with any threaded spindle.

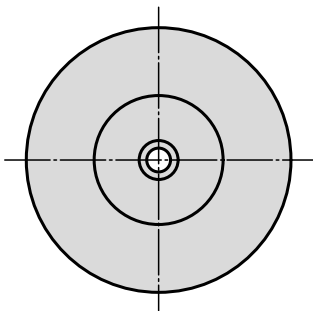
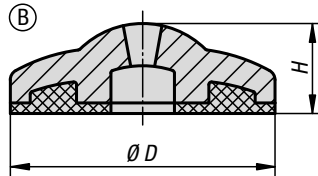
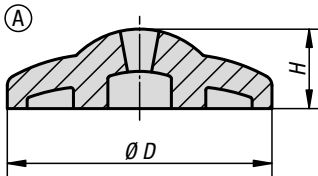
The anti-slip plate absorbs vibrations and prevents the levelling foot slipping.

For matching threaded spindles see K0429.

Drawing reference:

Form A without anti-slip plate

Form B with anti-slip plate



KIPP Levelling feet plates ECO die-cast zinc

Order No.	Form	D	H	Load rating max. kN
K0428.10301	A	30	11,5	16
K0428.10401	A	40	12	18
K0428.10501	A	50	14,5	20
K0428.20301	B	30	13,5	16
K0428.20401	B	40	14,5	18
K0428.20501	B	50	17,5	20

Levelling feet plates ECO

die-cast zinc, stainless steel or plastic



KIPP Levelling feet plates ECO stainless steel

Order No.	Form	D	H	Load rating max. kN
K0428.10302	A	30	11,5	22
K0428.10402	A	40	12	24
K0428.10502	A	50	14,5	26
K0428.20302	B	30	13,5	22
K0428.20402	B	40	14,5	24
K0428.20502	B	50	17,5	26

KIPP Levelling feet plates ECO plastic

Order No.	Form	D	H	Load rating max. kN
K0428.10303	A	30	11,5	15
K0428.10403	A	40	12	15
K0428.10503	A	50	14,5	15
K0428.20303	B	30	13,5	15
K0428.20403	B	40	14,5	15
K0428.20503	B	50	17,5	15