

Levelling feet plates extended

die-cast zinc



Material:

Plate die-cast zinc.
Anti-slip plate thermoplastic elastomer.

Version:

Plate black powder-coated.

Sample order:

K0426.30801
K0426.30801 and K0427.120661 **assembled**

Note for ordering:

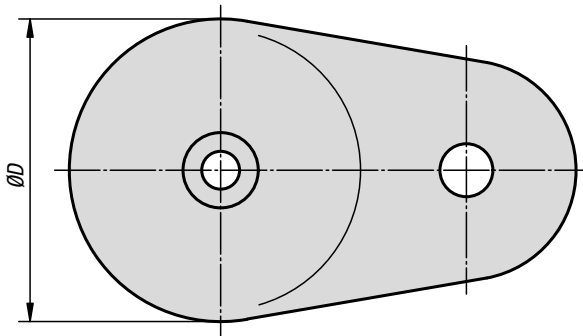
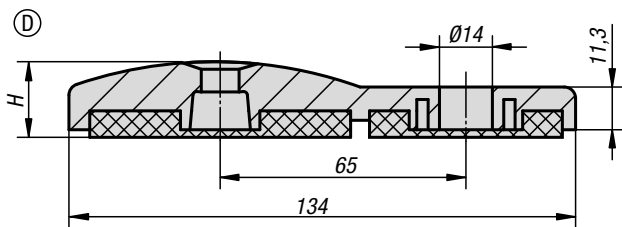
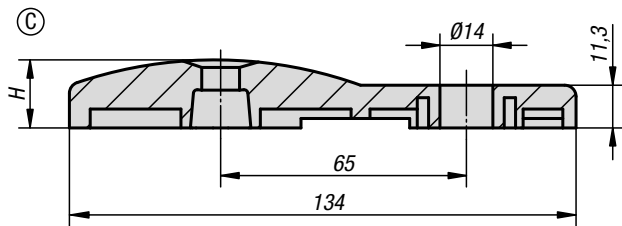
If the levelling foot plate and the threaded spindle are to be supplied assembled, please add the suffix **"assembled"** to the order number for the plate and spindle.
(e.g. K0426.30801 and K0427.120661 **assembled**.)

Note:

Levelling feet consist of a plate and a threaded spindle. Any plate can be combined with any threaded spindle. The anti-slip plate absorbs vibrations and prevents the levelling foot slipping. For matching threaded spindles see K0427.

Drawing reference:

Form C with screw-on hole, without anti-slip plate
Form D with screw-on hole, with anti-slip plate



KIPP Levelling feet plates extended die-cast zinc

Order No.	Form	D	H	Load rating max. kN
K0426.30801	C	80	18	35
K0426.40801	D	80	20	35