

## Swivel feet plates extended

die-cast zinc



**Material:**

Plate die-cast zinc.

Anti-slip plate thermoplastic elastomer.

**Version:**

Plate black powder-coated.

**Sample order:**

K0417.30801

K0417.30801 and K0421.060151 **assembled**

**Note for ordering:**

If the swivel foot plate and the threaded spindle or ball joint are to be supplied assembled, please add the suffix **“assembled”** to the order number for the plate and the spindle or ball joint.  
(e.g. K0417.30801 and K0421.060151 **assembled**.)

**Note:**

Swivel feet consist of a plate and a threaded spindle or ball joint. Any plate can be combined with any threaded spindle or ball joint. The anti-slip plate absorbs vibrations and prevents the swivel foot slipping.

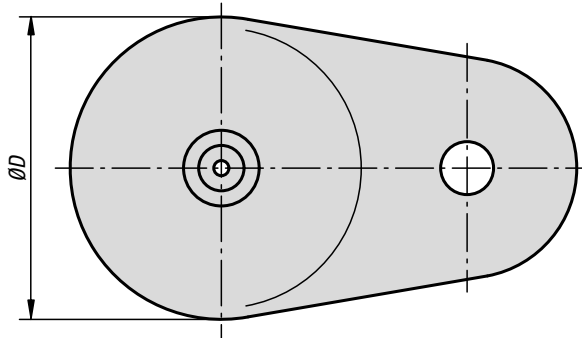
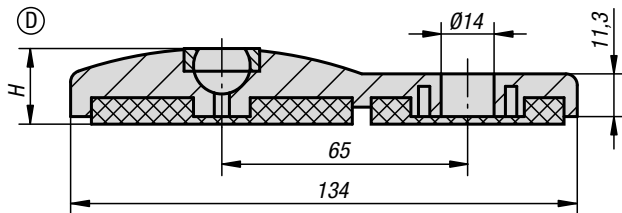
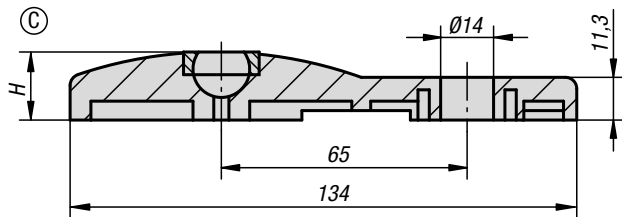
For matching threaded spindles see K0421.

For matching ball joints see K0422.

**Drawing reference:**

Form C with screw-on hole, without anti-slip plate

Form D with screw-on hole, with anti-slip plate



### KIPP Swivel feet plates extended, die-cast zinc

Order No.	Form	D	H	Load rating max. kN
K0417.30801	C	80	18	30
K0417.40801	D	80	20	30