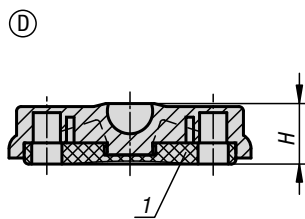
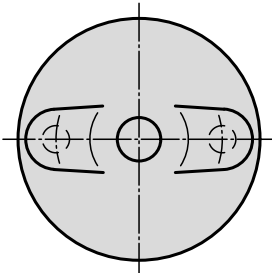
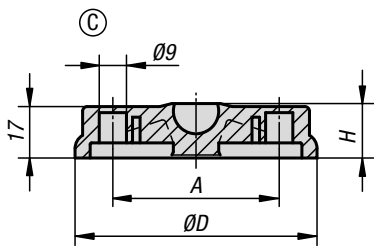
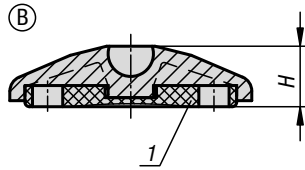
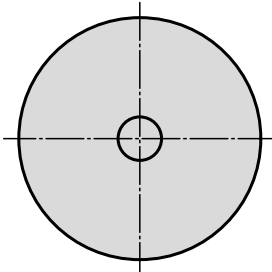
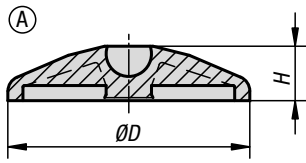


## Swivel feet plates

plastic



**Material:**

Plates, thermoplastic, glass bead reinforced.  
Anti-slip plate thermoplastic elastomer.

**Version:**

Black.

**Sample order:**

K0415.1030

K0415.1030 and K0421.060151 **assembled**

**Note for ordering:**

If the swivel foot plate and the threaded spindle or ball joint are to be supplied assembled, please add the suffix **"assembled"** to the order number for the plate and the spindle or ball joint.

(e.g. K0415.1030 and K0421.060151 **"assembled"**.)

**Note:**

Swivel feet consist of a plate and a threaded spindle or ball joint. Any plate can be combined with any threaded spindle or ball joint. The anti-slip plate absorbs vibrations and prevents the swivel foot slipping.

For matching threaded spindles see K0421.

For matching ball joints see K0422.

**Drawing reference:**

Form A without screw-on hole, without anti-slip plate

Form B without screw-on hole, with anti-slip plate

Form C with screw-on hole (closed), without anti-slip plate

Form D with screw-on hole (closed), with anti-slip plate

**KIPP Swivel feet plates, plastic**

Order No.	Form	D	A	H	Load rating max. kN
K0415.1030	A	30	-	18	5
K0415.1040	A	40	-	18	9
K0415.1045	A	45	-	18	9
K0415.1050	A	50	-	18	9
K0415.1060	A	60	-	18	9
K0415.1080	A	80	-	18	9
K0415.1100	A	100	-	18	9
K0415.2030	B	30	-	20	5
K0415.2040	B	40	-	20	9
K0415.2045	B	45	-	20	9
K0415.2050	B	50	-	20	9
K0415.2060	B	60	-	20	9
K0415.2080	B	80	-	20	9
K0415.2100	B	100	-	20	9
K0415.3080	C	80	55	18	9
K0415.3100	C	100	74	18	9
K0415.3120	C	120	94	18	9
K0415.4080	D	80	55	20	9
K0415.4100	D	100	74	20	9
K0415.4120	D	120	94	20	9

1) From plate Ø 80

## Swivel feet plates antistatic



**Material:**

Plates, thermoplastic, glass bead reinforced.  
Anti-slip plate thermoplastic elastomer.

**Version:**

Black.

**Sample order:**

K0415.11040

**Note for ordering:**

If the swivel foot plate and the threaded spindle or ball joint are to be supplied assembled, please add the suffix **“assembled”** to the order number for the plate and the spindle or ball joint.

(e.g. K0415.1030 and K0421.060151 **“assembled”**.)

**Note:**

Swivel feet consist of a plate and a threaded spindle or ball joint. Any plate can be combined with any threaded spindle or ball joint. The anti-slip plate absorbs vibrations and prevents the swivel foot slipping.

For matching threaded spindles see K0421.

For matching ball joints see K0422.

**Safety:**

These ESD products can also be used for devices, components and protection systems in areas with high risk of explosion.

Use of these ESD products prevents the occurrence of electrostatic spark discharges, eliminating the potential ignition of gases and dusts which could lead to explosions in enclosed spaces.

Manufacturers and operators must use and conform to ATEX directives for the protection of persons working in areas with high risk of explosion.

These ESD products are certified by TÜV-Süd in relation to their electrical discharge capability.

**Target groups:**

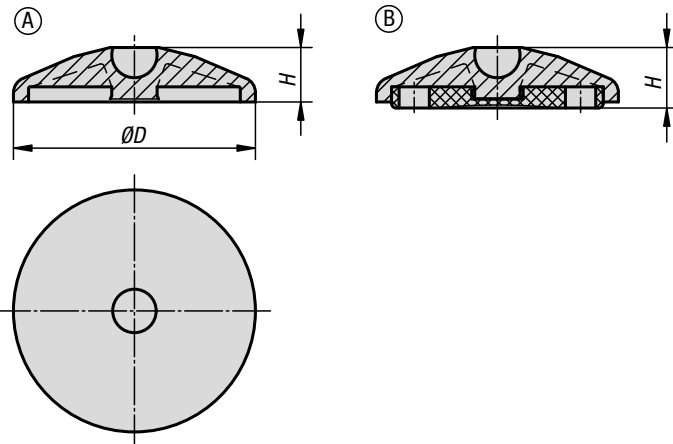
Device manufacturers required to conform to ATEX product directive 2014/34/EU.

Operators required to conform to ATEX worker protection directive 1999/92/EC.

**Drawing reference:**

Form A without screw-on hole, without anti-slip plate

Form B without screw-on hole, with anti-slip plate



### KIPP Antistatic plate for swivel feet

Order No.	Form	D	H	Load rating max. kN
K0415.11040	A	40	18	9
K0415.11050	A	50	18	9
K0415.11060	A	60	18	9
K0415.12040	B	40	20	9
K0415.12050	B	50	20	9
K0415.12060	B	60	20	9