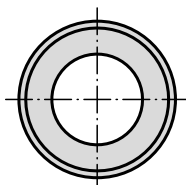
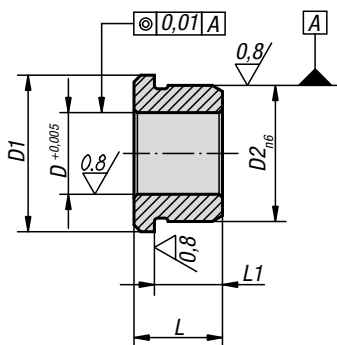


Bushes cylindrical

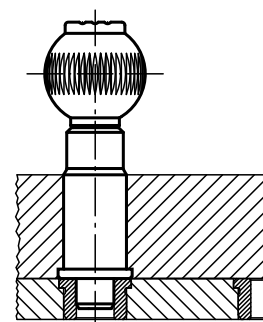


Material:
Steel.

Version:
Hardened and ground.

Sample order:
K0362.20

Note:
Bushes for precision indexing plungers K0361.



KIPP Cylindrical bushes

Order No.	D	D1	D2	L	L1
K0362.10	10	19	16	11	8,5
K0362.12	12	23	20	13	10
K0362.16	16	28	25	17	14
K0362.20	20	33	30	16	13
K0362.25	25	42	38	19	16