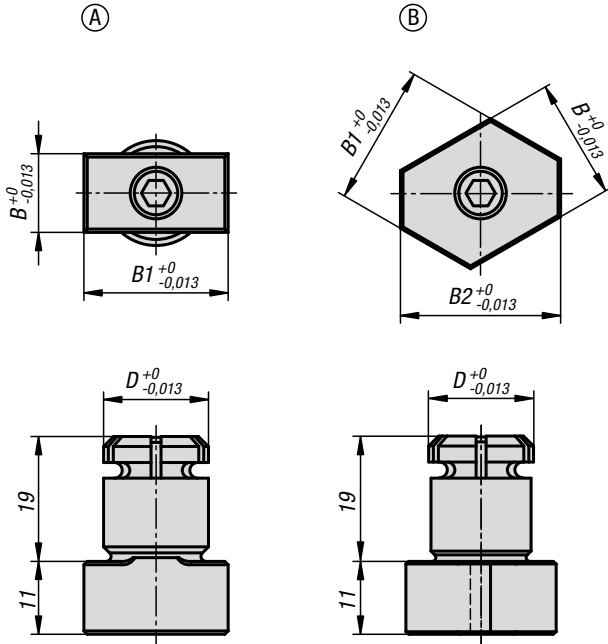
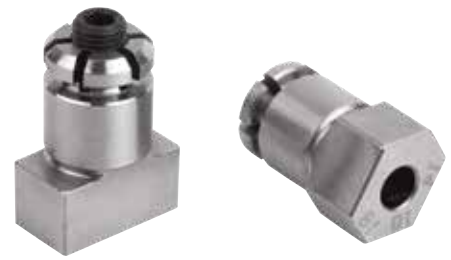


Locating pins expanding



Material:

Carbon steel.

Version:

Tempered and black oxidised.
Locating diameter and guide faces ground.

Sample order:

K0356.1610

Note:

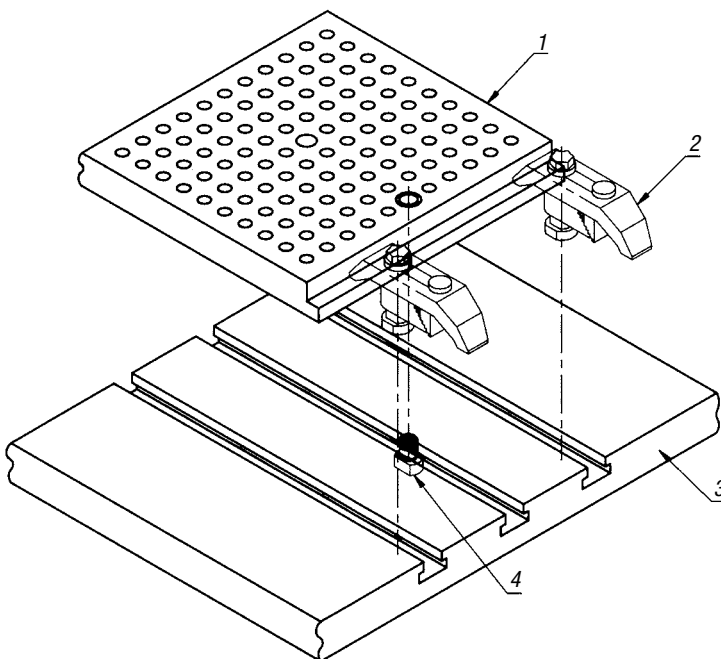
These expanding locating pins enable e.g. tooling plates to be positioned in the T-slots of machine tables (see illustration).

The plates to be positioned must have two holes matching the expanding pin diameter.

The expansion screw has a broached through hexagonal hole allowing the pin to be tightened or loosened from two sides.

Drawing reference:

- 1) tooling plate
- 2) clamp straps
- 3) machine table
- 4) expanding locating pin



KIPP Locating pins, expanding

| Order No. | Form | D | B | B1 | B2 | Recommended \emptyset |
|------------|------|----|----|----|----|-------------------------|
| K0356.1610 | A | 16 | 10 | 20 | - | 16,01 \pm 0,01 |
| K0356.1612 | A | 16 | 12 | 22 | - | 16,01 \pm 0,01 |
| K0356.1614 | B | 16 | 14 | 16 | 18 | 16,01 \pm 0,01 |
| K0356.2024 | B | 20 | 24 | 28 | 32 | 20,01 \pm 0,01 |