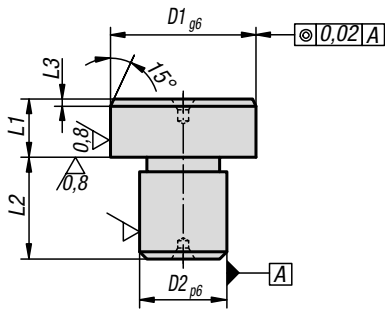


Positioning pins

cylindrical, ground



Material:
Tool steel.

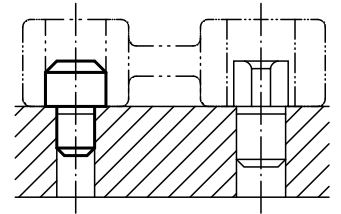
Version:
Hardened and ground.

Sample order:
K0352.08

Note:
Top face with centrebore.

KIPP Cylindrical positioning pins, ground

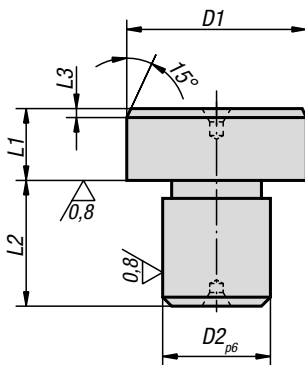
Order No.	D1	D2	L1	L2	L3
K0352.05	8	5	8	8	2
K0352.07	10	7	8	8	2
K0352.08	12	8	8	10	2
K0352.081	14	8	8	10	3
K0352.09	16	9	8	12	3
K0352.12	18	12	8	12	3
K0352.121	20	12	8	14	3
K0352.14	22	14	8	14	3
K0352.16	25	16	8	16	3



K0353

Positioning pins cylindrical

not ground



Material:
Tool steel.

Version:
Hardened.

Sample order:
K0353.05

Note:
Top face with centrebore.

KIPP Cylindrical positioning pins, not ground

Order No.	D1	D2	L1	L2	L3
K0353.05	8,5	5	8	8	2
K0353.07	10,5	7	8	8	2
K0353.08	12,5	8	8	10	2
K0353.081	14,5	8	8	10	3
K0353.09	16,5	9	8	12	3
K0353.12	18,5	12	8	12	3
K0353.121	20,5	12	8	14	3
K0353.14	22,5	14	8	14	3
K0353.16	25,5	16	8	16	3

